



極致工藝 · 真空應用



凱威科真空科技有限公司  
K-VAC VACUUM TECHNOLOGY CO., LTD

深圳總部：

深圳市寶安區松崗鎮江邊第二工業區第二棟（金亨利科技園）  
2nd Building, Jiangbian Second Industrial Park, Songgang Town, Baoan District, Shenzhen, China  
TEL: 0755-27537366 FAX: 0755-27537799  
E-MAIL: info@kvac.com.cn  
http://www.kvac.com.cn

天津分公司：

天津市津南區雙港科技產業園港園18號樓1門  
No.18, Shuanggang science&technology industrial park, Jinnan district, Tianjin, China.  
TEL: 13911023038 18519709328

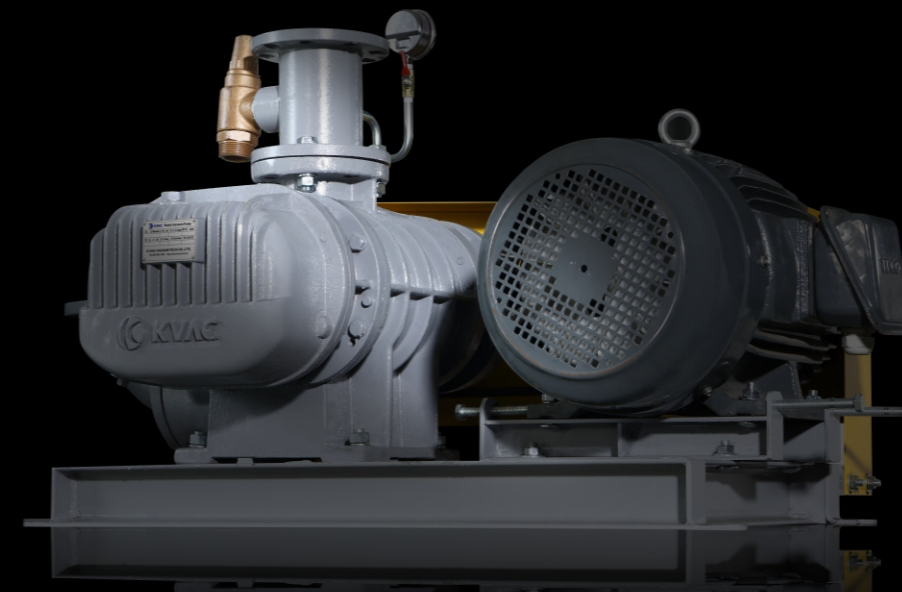
蘇州分公司

江蘇省蘇州市高新區嵩山路223號（蘇州航天電器對面）  
223, Songshan Road, New District, Suzhou, China  
TEL: 0512-66906771 FAX: 0512-66906773-616

台灣 凱威科真空科技股份有限公司：

新北市三重區重新路五段609巷20號9樓之11（湯城園區）  
9F-11, No. 20, Lane 609, Sec. 5, Chong Xin Rd., San Chong District,  
New Taipei City  
TEL: 886-2-2999-8998 FAX: 886-2-2999-9798  
E-MAIL: kvac.tech@msa.hinet.net  
http://www.kvac.com.tw

全國服務熱線：400-885-0050



Roots Blower & vacuum Pump/罗茨鼓风机 & 真空泵

*KVAC is professional for solutions & service in vacuum*



# Contents



02	公司簡介
04	KRB-SV 性能表
07	KRB-SC 性能曲線
10	KRB-SV 性能曲線
12	KRB-SC 性能曲線
14	KRB-SV(C) 外型尺寸圖
18	KRB-V 性能表
21	KRB-C 性能表
24	KRB-V 性能曲線
26	KRB-C 性能曲線
28	KRB-V(C) 外型尺寸圖
31	附屬配件
33	Service

凱威科真空科技（深圳）有限公司是中國最先進的真空供應商之一，業務範圍涵蓋半導體、複合半導體、化學、醫藥、冶金、科學儀器及研發等相關產業。全中國化的事業單位包含半導體、平面顯示器、太陽能、科學及真空工業。本公司結合相關應用專業人員並以強大的操作和技術支援做為後盾提供種類繁多的產品與技術服務。

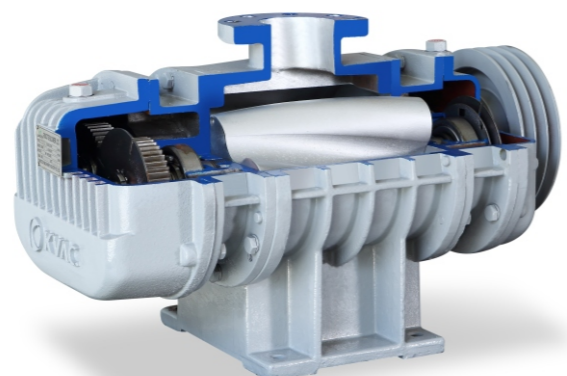
凱威科真空科技（深圳）有限公司，營運範圍超過10多個國家遍及5大區域性組織：韓國、美國、日本、亞洲及歐洲，全中國約有150名員工。

K-VAC中國深圳公司於2005年成立，位於深圳市松崗金亨利科技園區內，提供尖端技術的維修及服務。並分別於香港、北京、蘇州設立各區域辦事處，以提供全中國客戶即時性的產品銷售及售後服務。

近期凱威科推出幾款K-VAC品牌的機械式真空泵，憑藉團隊多年的技術與經驗，K-VAC的產品具備著品質穩定、性能優越、可靠性高的優勢，歡迎各界參考比較，並在凱威科公司所提供的完善服務體系下，給客戶持續提供高性價比的真空泵。

公司主要業務範圍：

- 各式PUMP系統、測試儀器、零配件等其他相關產品之銷售
- 半導體、製程真空技術、平版顯示技術、研發、分析儀器、薄膜塗層系統及工業真空技術等市場服務。
- 產品升級與二手商品翻修服務、全球服務支援、零件清潔、產品訓練、原廠零副件等支援服務。



### KRB-SV KRB-SC

獨特的螺旋轉子設計因其為連續壓縮粉塵不易沉積、由於其工作時氣體壓縮為連續壓縮，所以螺旋轉子羅茨鼓風機及真空泵相對傳統轉子在運行時噪音較小、震動較小、且葉輪不易卡死、使用壽命較長。

操作時空氣潔淨、無油污，因為無油污，無油煙擴散，排出的氣體潔淨，避免環境污染。

一體化轉子/軸裝置無磨損，可長時間連續運行而鼓風機性能不減低。

其高效能葉片可進行高速運行

保養維修簡單，採用可補給潤滑脂的特殊軸承，保證鼓風機使用壽命長。

採用防齒輪油外泄機構，因而無漏油問題。

各種型號齊全，請根據需要先擇合適的類型。

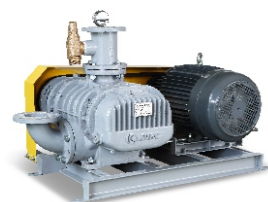
#### 應用

中央上料系統、污水處理、吸著搬運、真空乾燥、真空鑄造、印刷機設備、紡織行業、切削物回收、擠奶設備。

## KRB-SV真空型性能表

型號	轉速 min <sup>-1</sup>	風量 (m <sup>3</sup> /min) 功率 (kW)									
		-10kpa -1000mmaq		-20kpa -2000mmaq		-30kpa -3000mmaq		-40kpa -4000mmaq		-50kpa -5000mmaq	
		m <sup>3</sup> /min	kW	m <sup>3</sup> /min	kW	m <sup>3</sup> /min	kW	m <sup>3</sup> /min	kW	m <sup>3</sup> /min	kW
KRB-40SV	1650	0.60	0.19	0.58	0.37	0.51	0.50	0.48	0.62		
	1800	0.68	0.21	0.65	0.40	0.59	0.55	0.55	0.67		
	1950	0.75	0.23	0.72	0.43	0.66	0.59	0.62	0.73		
	2100	0.83	0.24	0.80	0.47	0.74	0.64	0.70	0.79		
	2250	0.90	0.26	0.87	0.50	0.81	0.69	0.77	0.84		
	2400	0.97	0.28	0.95	0.53	0.88	0.73	0.85	0.90		
	2550	1.05	0.30	1.02	0.57	0.96	0.78	0.92	0.95		
KRB-50SV	850	0.99	0.41	0.82	0.80	0.61	1.16	0.36	1.51	0.14	1.84
	1000	1.31	0.48	1.14	0.94	0.93	1.37	0.69	1.77	0.46	2.16
	1150	1.63	0.56	1.47	1.08	1.25	1.57	1.01	2.04	0.79	2.49
	1300	1.95	0.63	1.79	1.22	1.58	1.78	1.33	2.31	1.11	2.81
	1450	2.27	0.70	2.11	1.36	1.90	1.98	1.65	2.57	1.43	3.13
	1600	2.60	0.77	2.43	1.50	2.22	2.19	1.97	2.84	1.75	3.46
	1750	2.92	0.85	2.75	1.64	2.54	2.39	2.29	3.11	2.07	3.78
KRB-65SV	850	2.09	0.66	1.91	1.28	1.68	1.87	1.41	2.42	1.09	2.95
	1000	2.60	0.78	2.43	1.51	2.19	2.20	1.92	2.85	1.60	3.47
	1150	3.12	0.89	2.95	1.73	2.71	2.53	2.44	3.28	2.12	3.99
	1300	3.64	1.01	3.46	1.96	3.23	2.86	2.96	3.71	2.64	4.51
	1450	4.15	1.13	3.98	2.19	3.74	3.19	3.47	4.13	3.15	5.03
	1600	4.67	1.24	4.50	2.41	4.26	3.52	3.99	4.56	3.67	5.55
	1750	5.19	1.36	5.01	2.64	4.78	3.85	4.51	4.99	4.19	6.08
KRB-80SV	850	3.24	1.12	2.83	2.14	2.36	3.08	1.83	3.94	1.23	4.73
	1000	4.14	1.32	3.73	2.52	3.26	3.62	2.73	4.63	2.13	5.57
	1150	5.04	1.51	4.63	2.90	4.16	4.16	3.63	5.33	3.03	6.40
	1300	5.94	1.71	5.53	3.27	5.06	4.71	4.53	6.02	3.93	7.24
	1450	6.84	1.91	6.43	3.65	5.96	5.25	5.43	6.72	4.83	8.08
	1600	7.74	2.11	7.33	4.03	6.86	5.79	6.33	7.41	5.73	8.91
	1750	8.64	2.30	8.23	4.41	7.76	6.33	7.23	8.11	6.63	9.75
KRB-100SV	850	5.79	1.57	5.19	3.00	4.48	4.31	3.67	5.51	2.74	6.63
	1000	7.05	1.84	6.45	3.53	5.74	5.07	4.93	6.49	4.00	7.80
	1150	8.31	2.12	7.71	4.05	7.00	5.83	6.19	7.46	5.26	8.97
	1300	9.57	2.40	8.97	4.58	8.26	6.59	7.45	8.43	6.52	10.14
	1450	10.83	2.67	10.23	5.11	9.52	7.35	8.71	9.41	7.78	11.31
	1600	12.09	2.95	11.49	5.64	10.78	8.11	9.97	10.38	9.04	12.47
	1750	13.35	3.23	12.75	6.17	12.04	8.87	11.23	11.35	10.30	13.64
KRB-125SAV	750	8.13	2.05	7.35	3.91	6.48	5.63	5.53	7.20	4.46	8.66
	900	10.02	2.46	9.24	4.70	8.37	6.75	7.42	8.64	6.35	10.39
	1050	11.91	2.86	11.13	5.48	10.26	7.88	9.31	10.08	8.24	12.12
	1200	13.80	3.27	13.02	6.26	12.15	9.00	11.20	11.52	10.13	13.85
	1350	15.69	3.68	14.91	7.04	14.04	10.13	13.09	12.96	12.02	15.59
	1500	17.58	4.09	16.80	7.83	15.93	11.25	14.98	14.40	13.91	17.32
	1650	19.47	4.50	18.69	8.61	17.82	12.38	16.87	15.84	15.80	19.05





## KRB-SV真空型性能表

型號	轉速	風量 (m³/min) 功率 (kW)									
		-10kpa -1000mmaq		-20kpa -2000mmaq		-30kpa -3000mmaq		-40kpa -4000mmaq		-50kpa -5000mmaq	
	min <sup>-1</sup>	m³/min	kW	m³/min	kW	m³/min	kW	m³/min	kW	m³/min	kW
KRB-125SV	750	10.29	2.59	9.30	4.96	8.20	7.13	7.01	9.12	5.65	10.97
	900	12.69	3.11	11.70	5.95	10.60	8.55	9.40	10.95	8.04	13.16
	1050	15.08	3.63	14.09	6.94	12.99	9.98	11.79	12.77	10.44	15.35
	1200	17.48	4.15	16.49	7.93	15.39	11.40	14.19	14.59	12.83	17.55
	1350	19.87	4.66	18.88	8.92	17.78	12.83	16.58	16.42	15.23	19.74
	1500	22.26	5.18	21.27	9.91	20.17	14.25	18.98	18.24	17.62	21.93
	1650	24.66	5.70	23.67	10.90	22.57	15.68	21.37	20.07	20.01	24.13
KRB-150SV	750	13.32	3.34	12.55	6.39	11.69	9.19	10.68	11.76	9.55	14.14
	900	16.40	4.01	15.64	7.67	14.78	11.03	13.77	14.11	12.64	16.97
	1050	19.49	4.68	18.73	8.95	17.86	12.86	16.86	16.47	15.72	19.80
	1200	22.58	5.35	21.81	10.23	20.95	14.70	19.94	18.82	18.81	22.62
	1350	25.66	6.02	24.90	11.50	24.04	16.54	23.03	21.17	21.90	25.45
	1500	28.75	6.68	27.99	12.78	27.12	18.38	26.12	23.52	24.98	28.28
	1650	31.84	7.35	31.08	14.06	30.21	20.21	29.20	25.88	28.07	31.11
KRB-200SV	600	17.01	4.84	15.99	9.27	14.86	13.32	13.49	17.06	11.98	20.51
	750	22.68	6.05	21.66	11.58	20.53	16.65	19.16	21.32	17.65	25.64
	900	28.35	7.27	27.33	13.90	26.20	19.98	24.83	25.59	23.32	30.77
	1050	34.02	8.48	33.00	16.22	31.87	23.32	30.50	29.85	28.99	35.89
	1200	39.69	9.69	38.67	18.53	37.54	26.65	36.17	34.12	34.66	41.02
	1350	45.36	10.90	44.34	20.85	43.21	29.98	41.84	38.38	40.33	46.15
	1500	51.03	12.11	50.01	23.17	48.88	33.31	47.51	42.65	46.00	51.28
KRB-200SAV	600	27.72	7.40	26.22	14.16	24.43	20.35	22.35	26.06	19.98	31.34
	750	36.38	9.25	34.88	17.70	33.09	25.44	31.01	32.58	28.64	39.17
	900	45.05	11.10	43.54	21.24	41.75	30.53	39.67	39.09	37.31	47.01
	1050	53.71	12.95	52.21	24.77	50.42	35.62	48.34	45.61	45.97	54.84
	1200	62.37	14.80	60.87	28.31	59.08	40.71	57.00	52.12	54.63	62.67
	1350	71.03	16.65	69.53	31.85	67.74	45.80	65.66	58.64	63.29	70.51
	1500	79.7	18.50	78.2	35.39	76.4	50.89	74.3	65.16	71.96	78.34
KRB-250SV	600	27.72	7.40	26.22	14.16	24.43	20.35	22.35	26.06	19.98	31.34
	750	36.38	9.25	34.88	17.70	33.09	25.44	31.01	32.58	28.64	39.17
	900	45.05	11.10	43.54	21.24	41.75	30.53	39.67	39.09	37.31	47.01
	1050	53.71	12.95	52.21	24.77	50.42	35.62	48.34	45.61	45.97	54.84
	1200	62.37	14.80	60.87	28.31	59.08	40.71	57.00	52.12	54.63	62.67
	1350	71.03	16.65	69.53	31.85	67.74	45.80	65.66	58.64	63.29	70.51
	1500	79.7	18.50	78.19	35.39	76.4	50.89	74.32	65.16	71.96	78.34
KRB-250SAV	600	39.31	10.34	37.13	17.81	34.37	25.13	31.74	32.48	28.82	39.97
	750	50.78	12.92	48.60	22.26	45.84	31.41	43.21	40.59	40.29	49.97
	900	62.25	15.50	60.07	26.72	57.31	37.70	54.68	48.71	51.76	59.96
	1050	73.71	18.09	71.53	31.17	68.77	43.98	66.14	56.83	63.22	69.95
	1200	85.18	20.67	83.00	35.62	80.24	50.26	77.61	64.95	74.69	79.95
	1350	96.65	23.26	94.47	40.07	91.71	56.55	89.08	73.07	86.16	89.94
	1500	108.1	25.84	105.9	44.53	103.2	62.83	100.5	81.19	97.63	99.93

## KRB-SV真空型性能表

型號	轉速	風量 (m³/min) 功率 (kW)									
		-10kpa -1000mmaq		-20kpa -2000mmaq		-30kpa -3000mmaq		-40kpa -4000mmaq		-50kpa -5000mmaq	
	min <sup>-1</sup>	m³/min	kW	m³/min	kW	m³/min	kW	m³/min	kW	m³/min	kW
KRB-300SV	600	58.94	14.25	56.27	27.26	53.15	39.19	49.71	50.18	45.70	60.34
	750	75.62	17.81	72.95	34.07	69.83	48.99	66.39	62.72	63.38	75.42
	900	92.30	21.38	89.63	40.89	86.51	58.79	83.07	75.27	79.06	90.51
	1050	109.0	24.94	106.3	47.70	103.2	68.58	99.75	87.81	95.74	105.6
	1200	125.7	28.50	123.0	54.52	119.9	78.38	116.4	100.4	112.4	120.7
	1350	142.3	32.06	139.7	61.33	136.6	88.18	133.1	112.9	129.1	135.8
	1500	159.0	35.63	156.3	68.15	153.2	97.98	149.8	125.4	145.8	150.8
KRB-300SAV	600	88.2	21.04	84.4	36.86	79.7	53.34	75.3	68.0	69.0	84.7
	700	104.6	24.54	100.9	43.01	96.2	62.23	91.8	79.4	85.5	98.9
	800	121.0	28.05	117.3	49.15	112.6	71.12	108.2	90.7	101.9	113.0
	900	137.5	31.56	133.7	55.29	129.1	80.00	124.7	102.0	118.4	127.1
	1000	153.9	35.06	150.2	61.44	145.5	88.89	141.1	113.4	134.8	141.2
	1100	170.3	38.57	166.6	67.58	161.9	97.78	157.5	124.7	151.2	155.3
	1200	186.8	42.07	183.0	73.72	178.4	106.7	174.0	136.1	167.7	169.5
KRB-350SV	600	138.1	32.72	132.3	57.32	124.7	82.94	117.9	105.8	107.9	131.7
	700	163.6	38.17	157.8	66.87	150.2	96.77	143.4	123.4	133.4	153.7
	800	189.1	43.63	183.3	76.42	175.7	110.6	168.9	141.1	158.9	175.7
	900	214.6	49.08	208.8	85.97	201.2	124.4	194.4	158.7	184.4	197.6
	1000	240.1	54.53	234.3	95.53	226.7	138.2	219.9	176.3	209.9	219.6
	1100	265.6	59.99	259.8	105.1	252.2	152.1	245.4	193.9	235.4	241.5
	1200	291.1	65.44	285.3	114.6	277.7	165.9	270.9	211.6	260.9	263.5
KRB-400SV	600	236.3	52.99	228.3	95.77	219.5	137.9	212.4	180.5	203.5	223.0
	650	257.4	57.40	249.4	103.8	240.5	149.4	233.4	195.5	224.6	241.6
	700	278.4	61.82	270.4	111.7	261.6	160.9	254.4	210.6	245.6	260.2
	750	299.4	66.23	291.4	119.7	282.6	172.4	275.4	225.6	266.6	278.8
	800	320.4	70.65	312.5	127.7	303.6	183.9	296.5	240.7	287.6	297.3
	850	341.5	75.07	333.5	135.7	324.6	195.4	317.5	255.7	308.7	315.9
	900	362.5	79.48	354.5	143.7	345.7	206.9	338.5	270.7	329.7	334.5

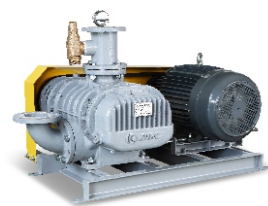


## KRB-SC壓力型性能表

型號	轉速 min <sup>-1</sup>	風量 (m <sup>3</sup> /min) 功率 (kW)															
		10kpa 1000mmaq		20kpa 2000mmaq		30kpa 3000mmaq		40kpa 4000mmaq		50kpa 5000mmaq		60kpa 6000mmaq		70kpa 7000mmaq		80kpa 8000mmaq	
		m <sup>3</sup> /min	kW	m <sup>3</sup> /min	kW	m <sup>3</sup> /min	kW	m <sup>3</sup> /min	kW	m <sup>3</sup> /min	kW	m <sup>3</sup> /min	kW	m <sup>3</sup> /min	kW	m <sup>3</sup> /min	kW
KRB-40SC	1650	0.60	0.19	0.57	0.37	0.54	0.53	0.51	0.67	0.49	0.81	0.48	0.94				
	1800	0.68	0.21	0.64	0.40	0.61	0.57	0.59	0.74	0.57	0.88	0.55	1.02				
	1950	0.75	0.23	0.71	0.43	0.69	0.62	0.66	0.80	0.64	0.96	0.62	1.11				
	2100	0.83	0.24	0.79	0.47	0.76	0.67	0.74	0.86	0.71	1.03	0.70	1.19				
	2250	0.90	0.26	0.86	0.50	0.84	0.72	0.81	0.92	0.79	1.11	0.77	1.28				
	2400	0.97	0.28	0.94	0.53	0.91	0.77	0.88	0.98	0.86	1.18	0.85	1.36				
	2550	1.05	0.30	1.01	0.57	0.98	0.81	0.96	1.04	0.94	1.25	0.92	1.45				
KRB-50SC	850	0.99	0.41	0.79	0.80	0.64	1.16	0.50	1.51	0.38	1.84	0.29	2.15	0.21	2.45	0.15	2.74
	1000	1.31	0.48	1.11	0.94	0.96	1.37	0.82	1.77	0.70	2.16	0.61	2.53	0.53	2.88	0.47	3.22
	1150	1.63	0.56	1.44	1.08	1.28	1.57	1.15	2.04	1.02	2.49	0.93	2.91	0.86	3.32	0.79	3.71
	1300	1.95	0.63	1.76	1.22	1.61	1.78	1.47	2.31	1.34	2.81	1.25	3.29	1.18	3.75	1.12	4.19
	1450	2.27	0.70	2.08	1.36	1.93	1.98	1.79	2.57	1.67	3.13	1.58	3.67	1.50	4.18	1.44	4.67
	1600	2.60	0.77	2.40	1.50	2.25	2.19	2.11	2.84	1.99	3.46	1.90	4.05	1.82	4.61	1.76	5.16
	1750	2.92	0.85	2.72	1.64	2.57	2.39	2.43	3.11	2.31	3.78	2.22	4.43	2.14	5.05	2.08	5.64
KRB-65SC	850	2.07	0.62	1.89	1.21	1.71	1.76	1.55	2.29	1.41	2.78	1.29	3.26	1.19	3.71	1.09	4.15
	1000	2.58	0.73	2.41	1.42	2.22	2.07	2.07	2.69	1.93	3.27	1.81	3.83	1.71	4.37	1.60	4.88
	1150	3.10	0.84	2.93	1.64	2.74	2.38	2.58	3.09	2.45	3.77	2.33	4.41	2.22	5.03	2.12	5.62
	1300	3.62	0.95	3.45	1.85	3.26	2.69	3.10	3.50	2.96	4.26	2.84	4.99	2.74	5.68	2.64	6.35
	1450	4.13	1.06	3.96	2.06	3.77	3.01	3.62	3.90	3.48	4.75	3.36	5.56	3.26	6.34	3.15	7.08
KRB-80SC	850	3.24	1.12	2.87	2.14	2.54	3.08	2.23	3.94	1.95	4.73	1.70	5.47	1.48	6.15	1.28	6.79
	1000	4.14	1.32	3.77	2.52	3.44	3.62	3.13	4.63	2.85	5.57	2.60	6.44	2.38	7.24	2.18	7.99
	1150	5.04	1.51	4.67	2.90	4.34	4.16	4.03	5.33	3.75	6.40	3.50	7.40	3.28	8.33	3.08	9.19
	1300	5.94	1.71	5.57	3.27	5.24	4.71	4.93	6.02	4.65	7.24	4.40	8.37	4.18	9.41	3.98	10.39
	1450	6.84	1.91	6.47	3.65	6.14	5.25	5.83	6.72	5.55	8.07	5.30	9.33	5.08	10.50	4.88	11.58
KRB-100SC	850	5.80	1.57	5.19	3.00	4.65	4.31	4.16	5.51	3.74	6.63	3.36	7.66	3.03	8.62	2.74	9.51
	1000	7.06	1.84	6.45	3.53	5.91	5.07	5.42	6.49	5.00	7.80	4.62	9.01	4.29	10.14	4.00	11.19
	1150	8.32	2.12	7.71	4.05	7.17	5.83	6.68	7.46	6.26	8.97	5.88	10.36	5.55	11.66	5.26	12.86
	1300	9.58	2.40	8.97	4.58	8.43	6.59	7.94	8.43	7.52	10.14	7.14	11.71	6.81	13.18	6.52	14.54
	1450	10.84	2.67	10.23	5.11	9.69	7.35	9.20	9.41	8.78	11.31	8.40	13.06	8.07	14.70	7.78	16.22
KRB-125SAC	750	8.13	2.05	7.43	3.91	6.80	5.62	6.22	7.20	5.72	8.66	5.25	10.01	4.83	11.26	4.46	12.42
	900	10.02	2.46	9.32	4.70	8.69	6.75	8.11	8.64	7.61	10.39	7.14	12.01	6.72	13.51	6.35	14.91
	1050	11.91	2.86	11.21	5.48	10.58	7.87	10.00	10.08	9.50	12.12	9.03	14.01	8.61	15.76	8.24	17.39
	1200	13.80	3.27	13.10	6.26	12.47	9.00	11.89	11.52	11.39	13.85	10.92	16.01	10.50	18.01	10.13	19.88
	1350	15.69	3.68	14.99	7.04	14.36	10.12	13.78	12.96	13.28	15.58	12.81	18.01	12.39	20.27	12.02	22.36
	1500	17.58	4.09	16.88	7.83	16.25	11.25	15.67	14.40	15.17	17.31	14.70	20.01	14.28	22.52	13.91	24.85
1650	19.47	4.50	18.77	8.61	18.14	12.37	17.56	15.84	17.06	19.04	16.59	22.01	16.17	24.77	15.80	27.33	

## KRB-SC壓力型性能表

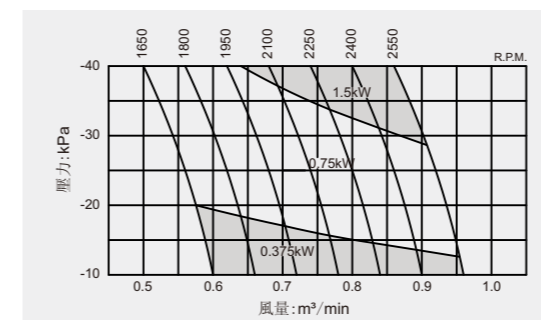
型號	轉速 min <sup>-1</sup>	風量 (m <sup>3</sup> /min) 功率 (kW)															
		10kpa 1000mmaq		20kpa 2000mmaq		30kpa 3000mmaq		40kpa 4000mmaq		50kpa 5000mmaq		60kpa 6000mmaq		70kpa 7000mmaq		80kpa 8000mmaq	
		m <sup>3</sup> /min	kW	m <sup>3</sup> /min	kW	m <sup>3</sup> /min	kW	m <sup>3</sup> /min	kW	m <sup>3</sup> /min	kW	m <sup>3</sup> /min	kW	m <sup>3</sup> /min	kW	m <sup>3</sup> /min	kW
KRB-125SC	750	10.29	2.59	9.42	4.96	8.62	7.13	7.88	9.12	7.25	10.97	6.66	12.67	6.11	14.26	5.65	15.74
	900	12.69	3.11	11.81	5.95	11.01	8.55	10.28	10.95	9.64	13.16	9.05	15.21	8.51	17.11	8.04	18.89
	1050	15.08	3.63	14.20	6.94	13.41	9.98	12.67	12.77	12.03	15.35	11.44	17.74	10.90	19.97	10.44	22.04
	1200	17.48	4.15	16.60	7.93	15.80	11.40	15.07	14.59	14.43	17.55	13.84	20.28	13.29	22.82	12.83	25.18
	1350	19.87	4.66	18.99	8.92	18.19	12.83	17.46	16.42	16.82	19.74	16.23	22.81	15.69	25.67	15.23	28.33
	1500	22.26	5.18	21.39	9.91	20.59	14.25	19.85	18.24	19.22	21.93	18.63	25.35	18.08	28.52	17.62	31.48
	1650	24.66	5.70	23.78	10.90	22.98	15.68	22.25	20.07	21.61	24.13	21.02	27.88	20.48	31.38	20.01	34.63
KRB-150SC	750	13.32	3.34	12.62	6.39	11.98	9.19	11.40	11.76	10.87	14.14	10.39	16.34	10.00	18.39	9.61	20.30
	900	16.40	4.01	15.70	7.67	15.06	11.03	14.49	14.11	13.95	16.97	13.48	19.61	13.09	22.07	12.70	24.36
	1050	19.49	4.68	18.79	8.95	18.15	12.86	17.58	16.47	17.04	19.80	16.57	22.88	16.18	25.75	15.78	28.41
	1200	22.58	5.35	21.88	10.23	21.24	14.70	20.66	18.82	20.13	22.62	19.65	26.15	19.26	29.42	18.87	32.47
	1350	25.66	6.02	24.96	11.50	24.33	16.54	23.75	21.17	23.21	25.45	22.74	29.42	22.35	33.10	21.96	36.53
KRB-200SC	600	17.01	4.84	15.95	9.27	15.04	13.32	14.21	17.06	13.53	20.51	12.93	23.71	12.40	26.68	11.98	29.45
	750	22.68	6.05	21.62	11.58	20.71	16.65	19.88	21.32	19.20	25.64	18.60	29.64	18.07	33.36	17.65	36.82
	900	28.35	7.27	27.29	13.90	26.38	19.98	25.55	25.59	24.87	30.77	24.27	35.57	23.74	40.03	23.32	44.18
	1050	34.02	8.48	32.96	16.22	32.05	23.32	31.22	29.85	30.54	35.89	29.94	41.49	29.41	46.70	28.99	51.55
	1200	39.69	9.69	38.63	18.53	37.72	26.65	36.89	34.12	36.21	41.02	35.61	47.42	35.08	53.37	34.66	58.91
KRB-200SAC	600	27.72	7.40	26.22	14.16	24.89	20.35	23.68	26.06	22.58	31.34	21.60	36.23	20.73	40.77	19.98	45.00
	750	36.38	9.25	34.88	17.70	33.55	25.44	32.34	32.58	31.24	39.17	30.26	45.28	29.39	50.96	28.64	56.25
	900	45.05	11.10	43.54	21.24	42.22	30.53	41.00	39.09	39.91	47.01	38.92	54.34	38.06	61.15	37.31	67.50
	1050	53.71	12.95	52.21	24.77	50.88	35.62	49.67	45.61	48.57	54.84	47.59	63.39	46.72	71.34	45.97	78.75
	1200	62.37	14.80	60.87	28.31	59.54	40.71	58.33	52.12	57.23	62.67	56.25	72.45	55.38	81.54	54.63	90.00
KRB-250SC	600	27.72	7.40	26.22	14.16	24.89	20.35	23.68	26.06	22.58	31.34	21.60	36.23	20.73	40.77	19.98	45.00
	750	36.38	9.25	34.88	17.70	33.55	25.44	32.34	32.58	31.24	39.17	30.26	45.28	29.39	50.96	28.64	56.25
	900	45.05	11.10	43.54	21.24	42.22	30.53	41.00	39.09	39.91	47.01	38.92	54.34	38.06	61.15	37.31	67.50
	1050	53.71	12.95	52.21	24.77	50.88	35.62	49.67	45.61	48.57	54.84	47.59	63.39	46.72	71.34	45.97	78.75
	1200	62.37	14.80	60.87	28.31	59.54	40.71	58.33	52.12	57.23	62.67	56.25	72.45	55.38	81.54	54.63	90.00
KRB-250SAC	600	39.45	10.36	37.54	18.02	35.93	25.92	34.56	33.71	33.33	41.48	32.19	49.20	31.19	56.8	30.35	64.3
	750	50.92	12.95	49.00	22.52	47.40	32.40	46.02	42.14	44.80	51.85	43.65	61.50	42.66	71.0	41.82	80.4
	900	62.38	15.53	60.47	27.03	58.87	38.88	57.49	50.57	56.27	62.22	55.12	73.80	54.13	85.2	53.29	96.5
	1050	73.85	18.12	71.94	31.53	70.33	45.36	68.96	58.99	67.73	72.59	66.59	86.10	65.59	99.4	64.75	112.6
	1200	85.32	20.71	83.41	36.04	81.80	51.84	80.43	67.42	79.20	82.96	78.06	98.39	77.06</			



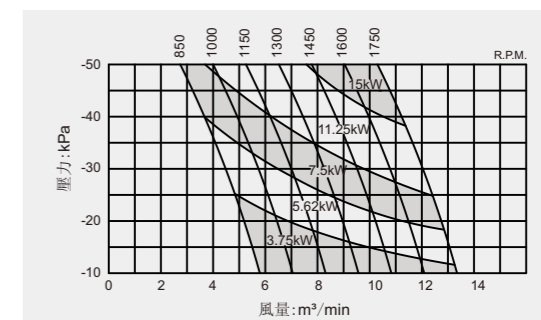
## KRB-SC壓力型性能表

型號	轉速 min <sup>-1</sup>	風量 (m <sup>3</sup> /min) 功率 (kW)															
		10kpa 1000mmaq		20kpa 2000mmaq		30kpa 3000mmaq		40kpa 4000mmaq		50kpa 5000mmaq		60kpa 6000mmaq		70kpa 7000mmaq		80kpa 8000mmaq	
		m <sup>3</sup> /min	kW	m <sup>3</sup> /min	kW	m <sup>3</sup> /min	kW	m <sup>3</sup> /min	kW	m <sup>3</sup> /min	kW	m <sup>3</sup> /min	kW	m <sup>3</sup> /min	kW	m <sup>3</sup> /min	kW
KRB-300SC	600	58.94	14.44	55.49	25.88	53.71	37.23	52.04	47.70	50.48	58.83	49.26	68.88	47.59	79.49	46.70	88.83
	750	75.62	18.06	72.17	32.35	70.39	46.54	68.72	59.63	67.16	73.53	65.94	86.10	64.27	99.36	63.38	111.0
	900	92.30	21.67	88.85	38.82	87.07	55.85	85.40	71.55	83.84	88.24	82.62	103.3	80.95	119.2	80.06	133.3
	1050	109.0	25.28	105.5	45.29	103.7	65.16	102.1	83.48	100.5	102.9	99.30	120.5	97.63	139.1	96.74	155.5
	1200	125.7	28.89	122.2	51.76	120.4	74.46	118.8	95.41	117.2	117.7	116.0	137.8	114.3	159.0	113.4	177.7
	1350	142.3	32.50	138.9	58.23	137.1	83.77	135.4	107.3	133.9	132.4	132.7	155.0	131.0	178.8	130.1	199.9
KRB-300SAC	600	88.3	21.07	85.0	37.30	82.3	53.64	80.0	71.4	78.1	87.0	76.1	103.1	74.5	119.0	72.5	136.5
	700	104.7	24.58	101.4	43.52	98.7	62.58	96.4	83.3	94.5	101.5	92.5	120.3	90.9	138.9	88.9	159.3
	800	121.1	28.10	117.8	49.74	115.1	71.52	112.8	95.2	110.9	116.0	108.9	137.5	107.3	158.7	105.3	182.1
	900	137.5	31.61	134.2	55.95	131.5	80.46	129.2	107.1	127.3	130.5	125.3	154.7	123.7	178.6	121.7	204.8
	1000	153.9	35.12	150.6	62.17	147.9	89.39	145.6	119.0	143.7	145.0	141.7	171.9	140.1	198.4	138.1	227.6
	1100	170.3	38.63	167.0	68.39	164.3	98.33	162.0	130.9	160.1	159.5	158.1	189.1	156.5	218.2	154.5	250.3
KRB-350SC	600	138.3	32.31	133.1	58.00	129.0	83.48	125.2	109.6	121.9	134.1	119.1	160.3	116.3	182.7	113.5	212.3
	700	163.8	37.70	158.6	67.67	154.5	97.39	150.7	127.9	147.4	156.4	144.6	187.1	141.8	213.2	139.0	247.7
	800	189.3	43.08	184.1	77.33	180.0	111.3	176.2	146.2	172.9	178.8	170.1	213.8	167.3	243.7	164.5	283.1
	900	214.8	48.47	209.6	87.00	205.5	125.2	201.7	164.5	198.4	201.1	195.6	240.5	192.8	274.1	190.0	318.5
	1000	240.3	53.85	235.1	96.67	231.0	139.1	227.2	182.7	223.9	223.4	221.1	267.2	218.3	304.6	215.5	353.9
	1100	265.8	59.24	260.6	106.3	256.5	153.0	252.7	201.0	249.4	245.8	246.6	294.0	243.8	335.0	241.0	389.2
KRB-400SC	600	236.3	53.28	230.3	95.65	225.5	137.7	221.3	180.8	217.6	221.1	214.1	264.4	211.3	301.4	208.8	350.1
	650	257.4	57.73	251.4	103.6	246.5	149.1	242.3	195.9	238.6	239.5	235.2	286.5	232.3	326.5	229.8	379.3
	700	278.4	62.17	272.4	111.6	267.5	160.6	263.3	210.9	259.6	257.9	256.2	308.5	253.4	351.6	250.8	408.5
	750	299.4	66.61	293.4	119.6	288.6	172.1	284.4	226.0	280.7	276.4	277.2	330.5	274.4	376.7	271.9	437.7
	800	320.4	71.05	314.4	127.5	309.6	183.6	305.4	241.1	301.7	294.8	298.2	352.6	295.4	401.8	292.9	466.8
	850	341.5	75.49	335.5	135.5	330.6	195.0	326.4	256.1	322.7	313.2	319.3	374.6	316.4	426.9	313.9	496.0
900	362.5	79.93	356.5	143.5	351.6	206.5	347.4	271.2	343.7	331.6	340.3	396.7	337.5	452.0	335.0	525.2	

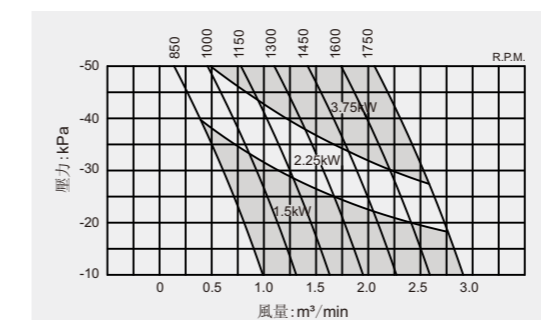
## KRB-SV真空型性能曲線



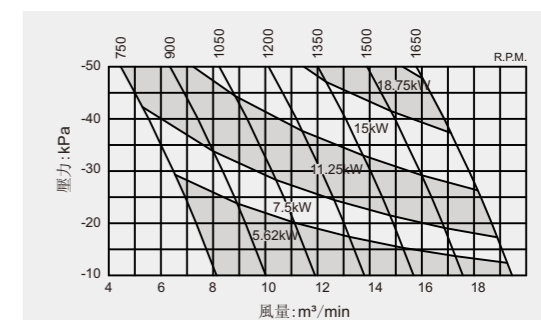
KRB-40SV



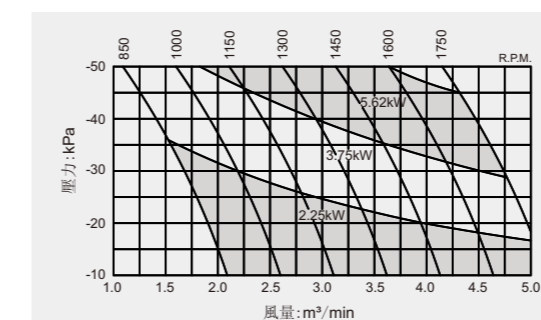
KRB-100SV



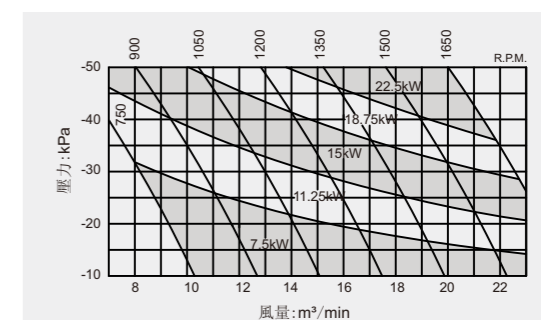
KRB-50SV



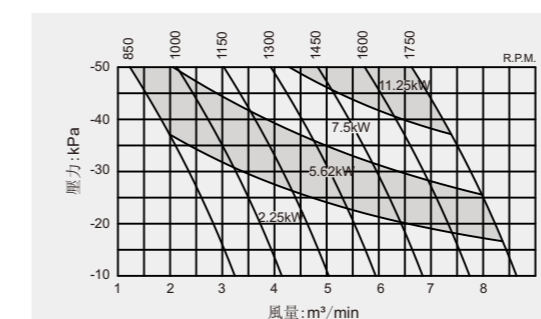
KRB-125SAV



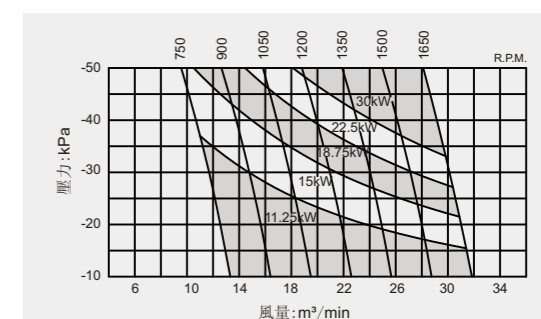
KRB-65SV



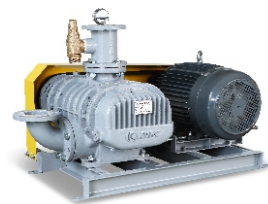
KRB-125SV



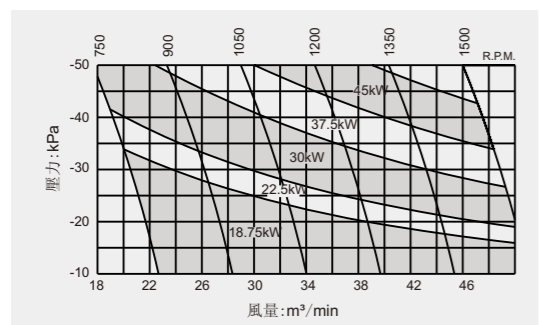
KRB-80SV



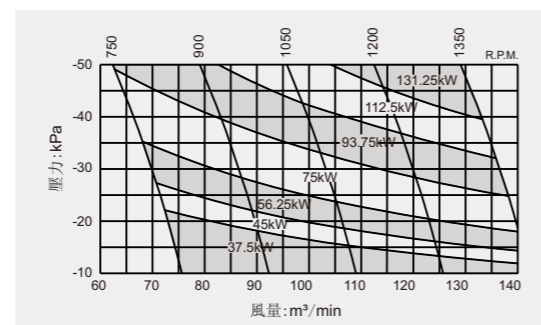
KRB-150SV



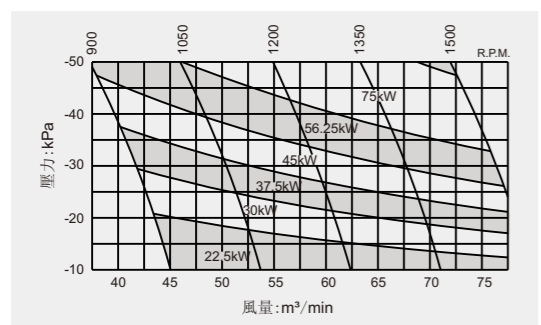
## KRB-SV真空型性能曲線



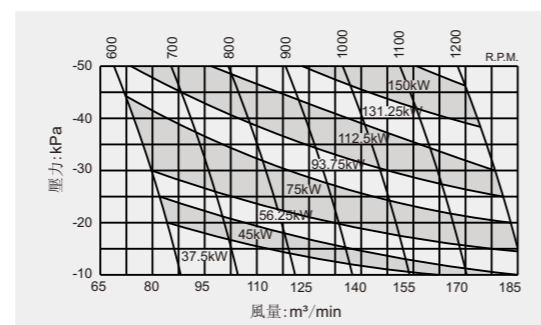
KRB-200SV



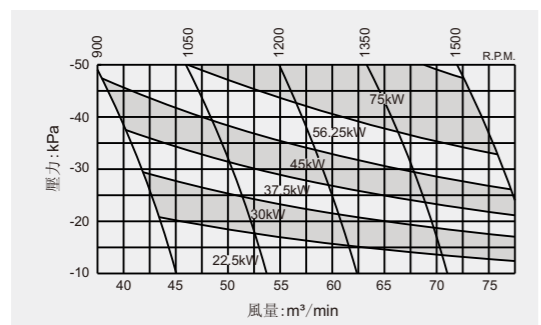
KRB-300SV



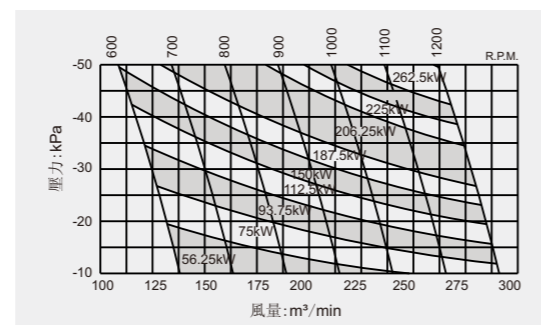
KRB-200SAV



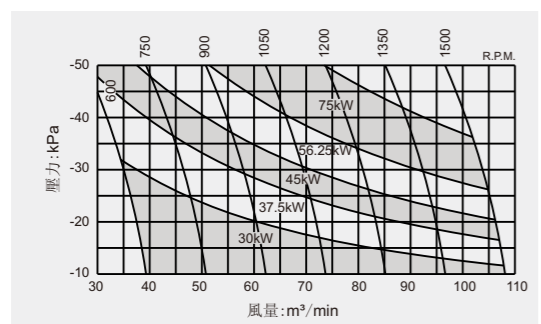
KRB-300SAV



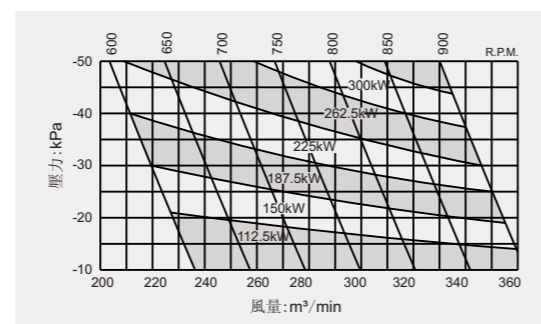
KRB-250SV



KRB-350SV

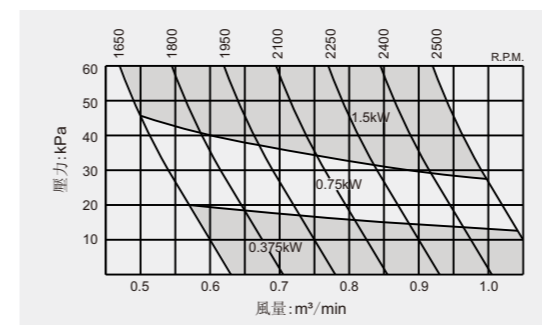


KRB-250SAV

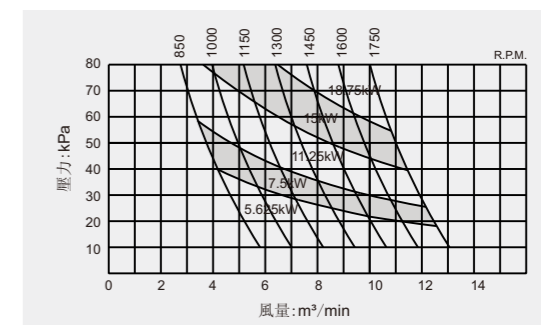


KRB-400SV

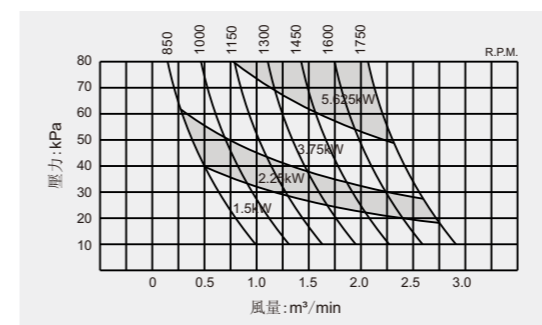
## KRB-SC壓力型性能曲線



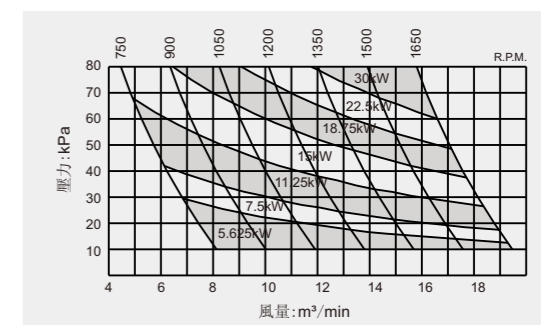
KRB-40SC



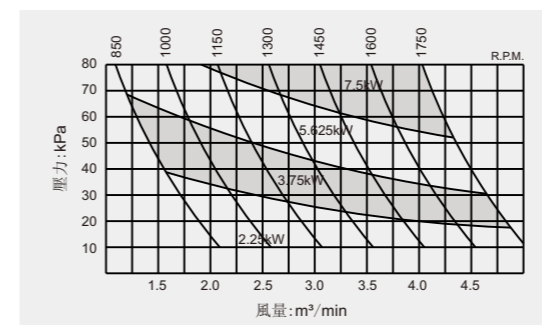
KRB-100SC



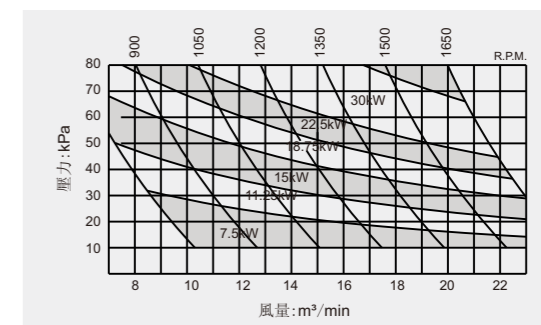
KRB-50SC



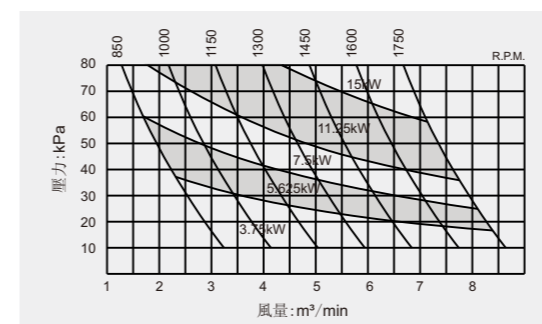
KRB-125SAC



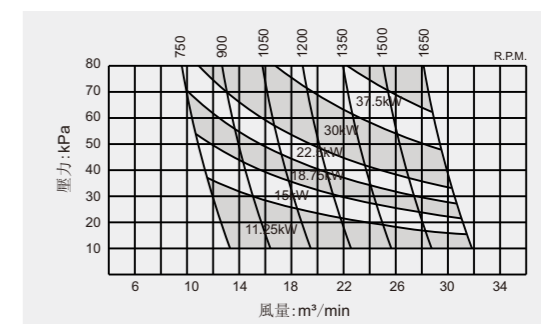
KRB-65SC



KRB-125SC

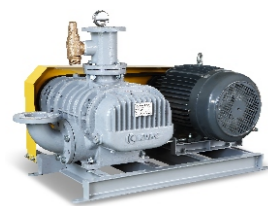


KRB-80SC

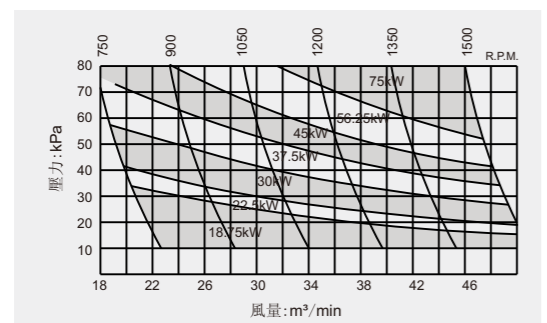


KRB-150SC

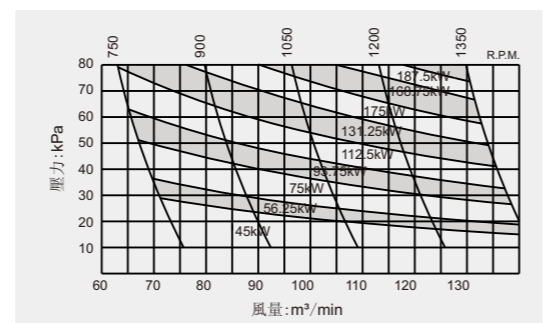




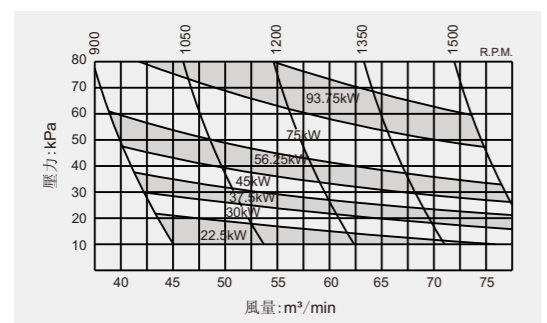
## KRB-SC壓力型性能曲線



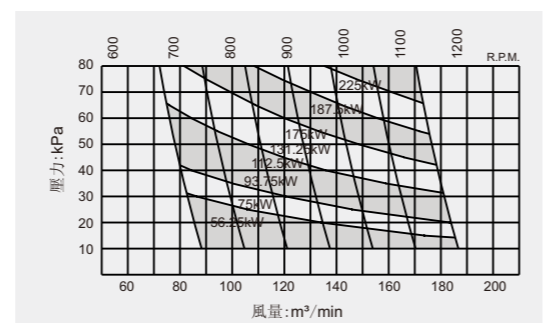
KRB-200SC



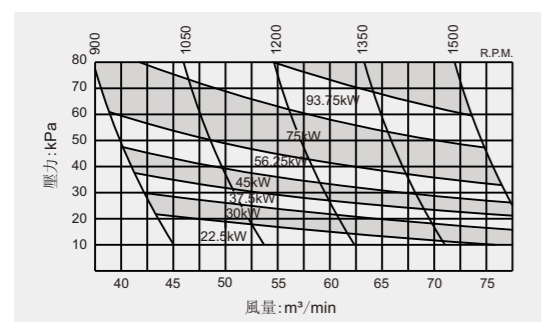
KRB-300SC



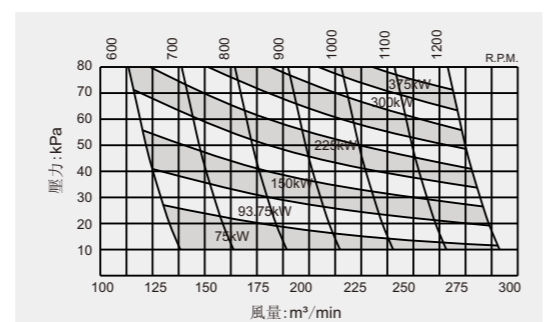
KRB-200SAC



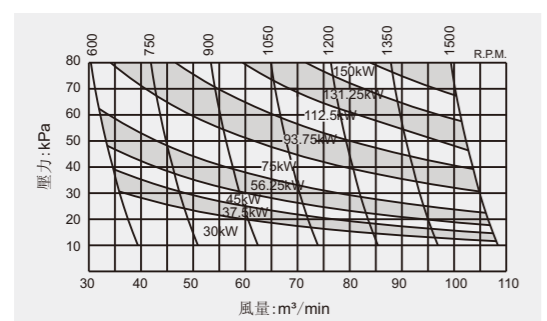
KRB-300SAC



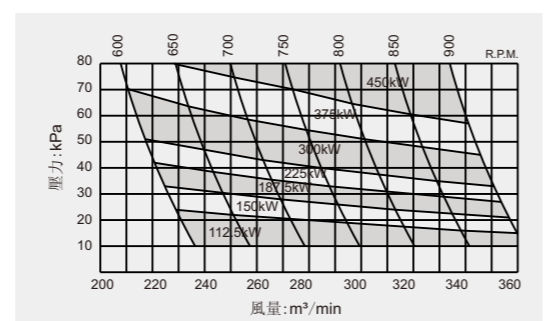
KRB-250SC



KRB-350SC

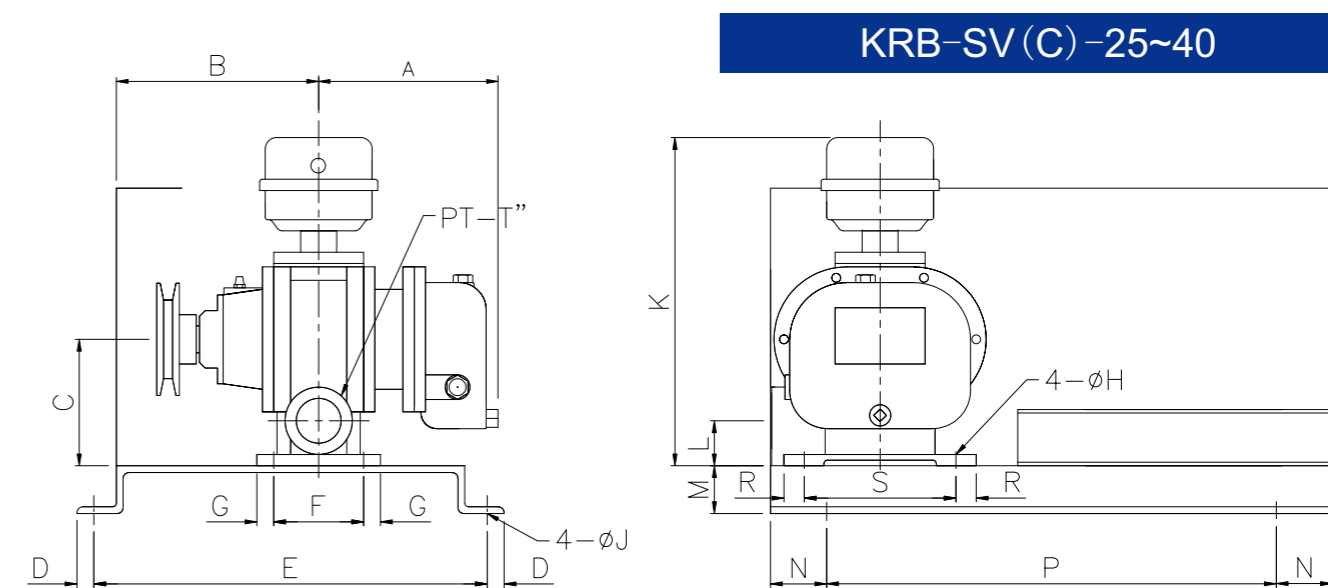


KRB-250SAC



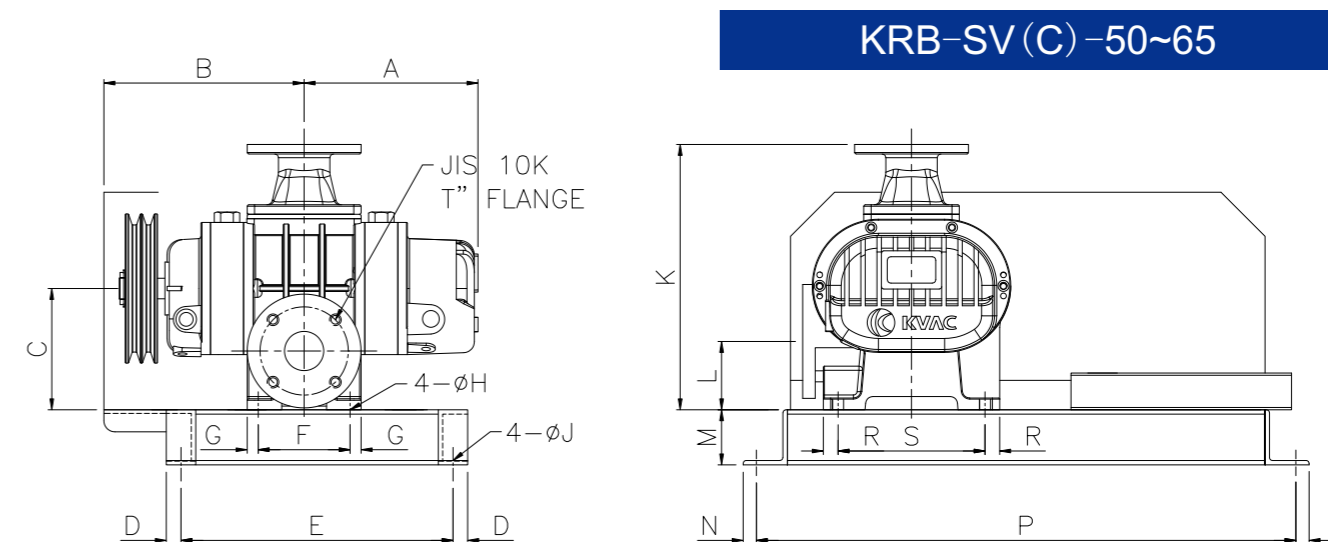
KRB-400SC

## 外形尺寸圖



KRB-SV(C)-25~40

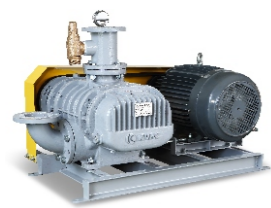
型號	A	B	C	D	E	F	G	H	J	K	L	M	N	P	R	S	T	WT (kg)
KRB-25S	135	145	120	15	350	54	13	10	12	340	40	43	50	400	15	135	1	20
KRB-40S	162	185	120	15	350	80	15	10	12	340	40	43	50	400	15	135	1.5	25



KRB-SV(C)-50~65

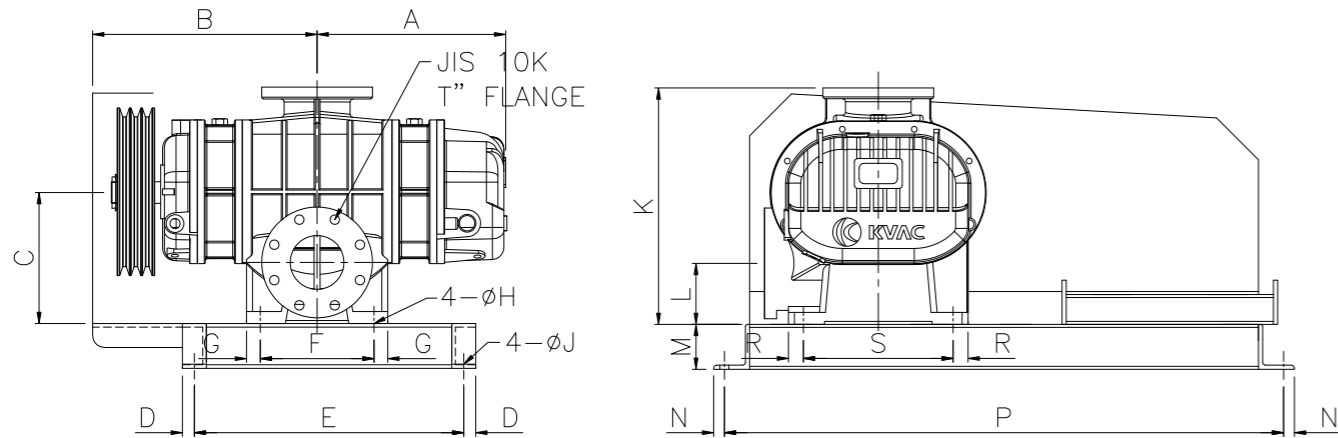
型號	A	B	C	D	E	F	G	H	J	K	L	M	N	P	R	S	T	WT (kg)
KRB-50S	240	270	168	20	370	125	15	15	15	356	90	75	18	734	15	200	2	76
KRB-65S	280	290	173	20	370	210	15	15	15	356	95	75	18	734	15	200	2.5	94





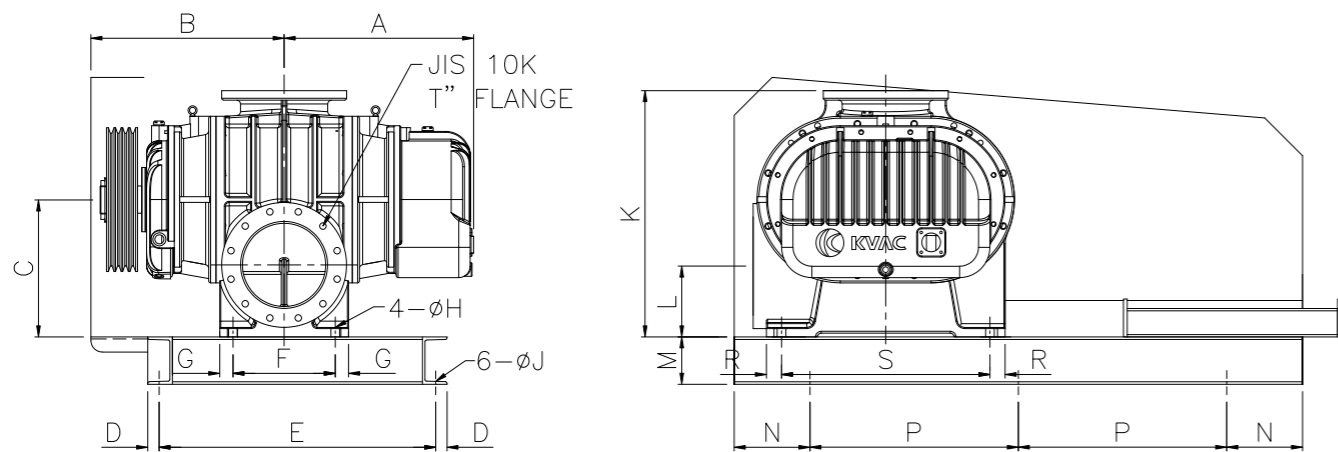
## 外形尺寸圖

### KRB-SV(C) -80~150



型號	A	B	C	D	E	F	G	H	J	K	L	M	N	P	R	S	T	WT(kg)
KRB-80S	315	375	220	20	450	190	25	19	15	395	102	75	18	934	25	250	3	167
KRB-100S	365	425	220	20	450	290	25	19	15	395	115	75	18	934	25	250	4	193
KRB-125SA	405	445	265	25	605	230	25	19	19	475	145	100	20	1190	25	350	5	319
KRB-125S	445	485	300	25	605	320	25	19	19	515	155	100	20	1190	25	350	5	353
KRB-150S	500	540	300	25	605	425	25	19	19	515	155	100	20	1190	25	350	6	418

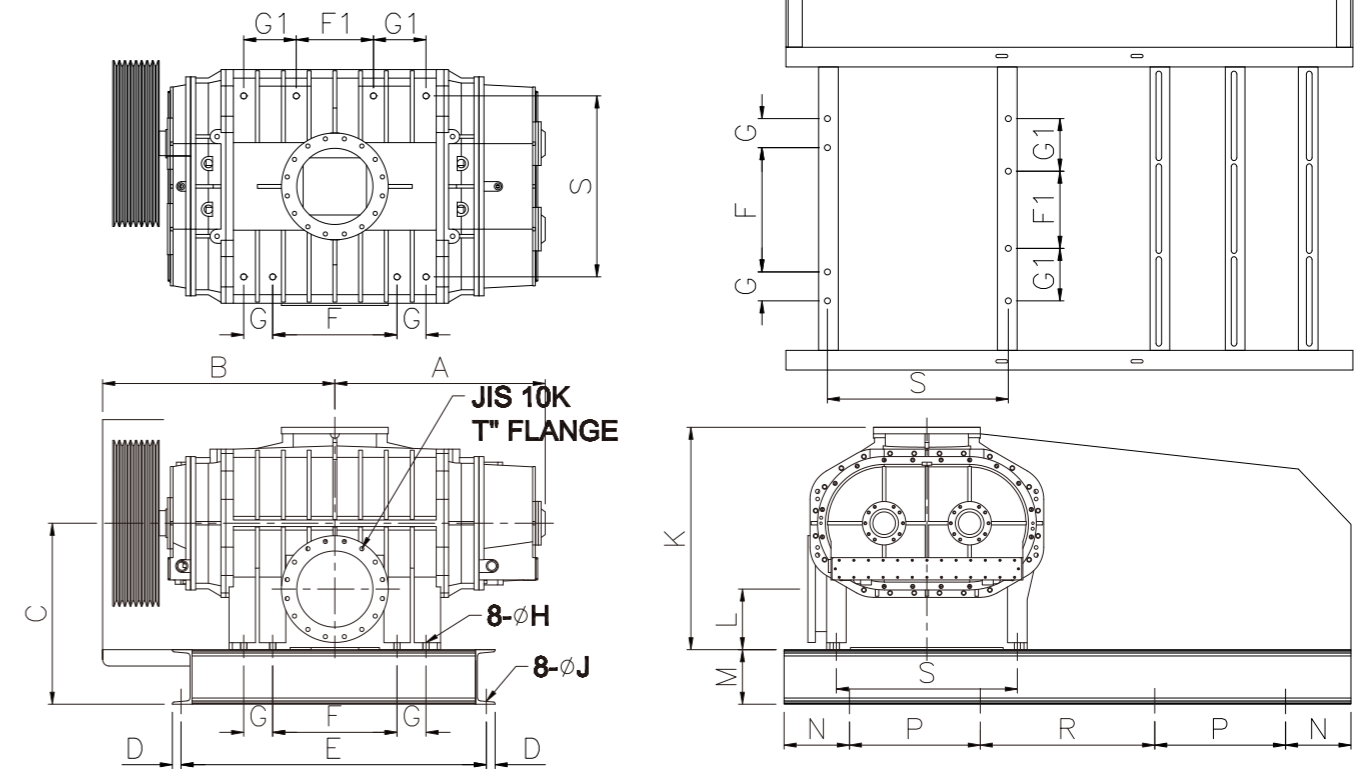
### KRB-SV(C) -200~300



型號	A	B	C	D	E	F	G	H	J	K	L	M	N	P	R	S	T	WT(kg)
KRB-200S	515	495	363	30	730	270	35	23	19	650	190	125	200	550	40	550	8	720
KRB-200SA	605	595	363	30	730	460	35	23	19	665	190	125	200	550	40	550	8	897
KRB-250S	605	595	388	30	730	460	35	23	19	675	225	125	200	550	40	550	10	913
KRB-200SA	778	678	500	40	850	650	65	27	24	875	250	200	200	800	55	620	10	1665
KRB-300S	900	805	500	40	1120	650	65	27	24	875	250	200	200	800	55	620	12	2010
KRB-300SA	954	840	505	40	1300	660	60	27	24	930	243	200	200	800	60	680	12	3200

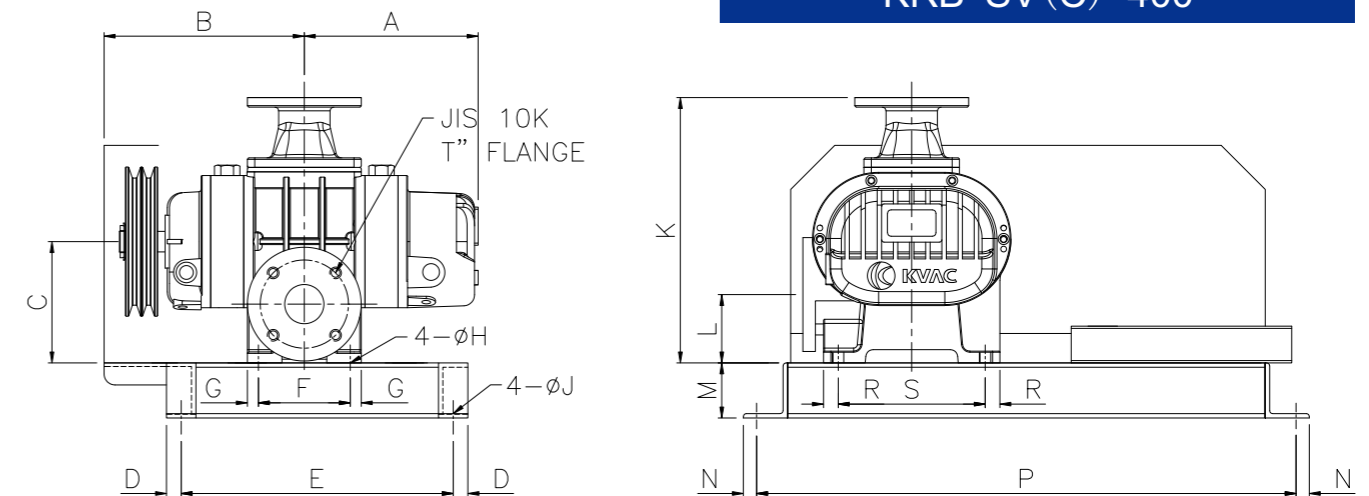
## 外形尺寸圖

### KRB-SV(C) -350



型號	A	B	C	D	E	F	F1	G	G1	H	J	K	L	M	N	P	R	S	T	WT(kg)
KRB-350S	965	1065	830	40	1400	570	354	133	35	241	24	1020	278	250	300	600	800	830	14	1400

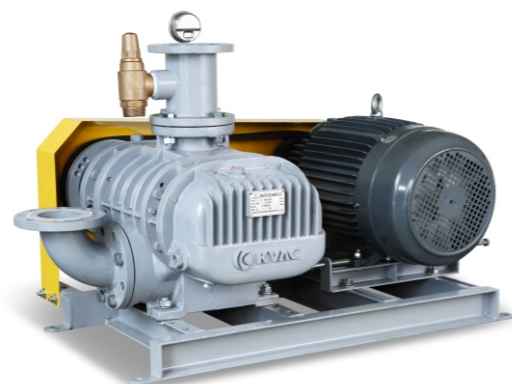
### KRB-SV(C) -400



型號	A	B	C	D	E	F	G	H	J	K	L	M	N	P	R	S	T	WT(kg)
KRB-400S	1043	1147	945	40	1400	930	60	35	24	1215	315	250	300	600	800	435	16	4650



# KRB-V KRB-C



## KRB-V KRB-C

三葉片羅茨轉子和雙螺形外殼能把噪音和振動都減到最小，而且無間斷地運轉方式達成了節能化的需求。

操作時空氣潔淨、無油混，因為無混油，無油煙擴散，排出的氣體潔淨，避免環境污染。

一體化轉子/軸裝置無磨損，可長時間連續運行而鼓風機性能不減低。

其高效能葉片可進行高速運行

保養維修簡單，採用可補給潤滑脂的特殊軸承，保證鼓風機使用壽命長。

採用防齒輪油外泄機構，因而無漏油問題。

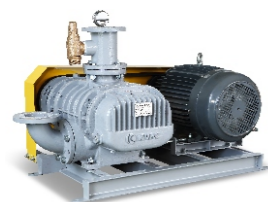
各種型號齊全，請根據需要先擇合適的類型。

### 應用

中央上料系統、污水處理、吸著搬運、真空乾燥、真空鑄造、印刷機設備、紡織行業、切削物回收、擠奶設備。

## KRB-V真空型性能表

型號	轉速 min <sup>-1</sup>	風量 (m <sup>3</sup> /min)				功率 (kW)					
		-10kpa -1000mmaq		-20kpa -2000mmaq		-30kpa -3000mmaq		-40kpa -4000mmaq		-50kpa -5000mmaq	
		m <sup>3</sup> /min	kW	m <sup>3</sup> /min	kW	m <sup>3</sup> /min	kW	m <sup>3</sup> /min	kW	m <sup>3</sup> /min	kW
KRB-40V	1650	0.60	0.19	0.58	0.37	0.51	0.50	0.48	0.62		
	1800	0.68	0.21	0.65	0.40	0.59	0.55	0.55	0.67		
	1950	0.75	0.23	0.72	0.43	0.66	0.59	0.62	0.73		
	2100	0.83	0.24	0.80	0.47	0.74	0.64	0.70	0.79		
	2250	0.90	0.26	0.87	0.50	0.81	0.69	0.77	0.84		
	2400	0.97	0.28	0.95	0.53	0.88	0.73	0.85	0.90		
	2550	1.05	0.30	1.02	0.57	0.96	0.78	0.92	0.95		
KRB-50V	850	0.99	0.41	0.82	0.80	0.61	1.16	0.36	1.51	0.14	1.84
	1000	1.31	0.48	1.14	0.94	0.93	1.37	0.69	1.77	0.46	2.16
	1150	1.63	0.56	1.47	1.08	1.25	1.57	1.01	2.04	0.79	2.49
	1300	1.95	0.63	1.79	1.22	1.58	1.78	1.33	2.31	1.11	2.81
	1450	2.27	0.70	2.11	1.36	1.90	1.98	1.65	2.57	1.43	3.13
	1600	2.60	0.77	2.43	1.50	2.22	2.19	1.97	2.84	1.75	3.46
	1750	2.92	0.85	2.75	1.64	2.54	2.39	2.29	3.11	2.07	3.78
KRB-65V	850	2.09	0.66	1.91	1.28	1.68	1.87	1.41	2.42	1.09	2.95
	1000	2.60	0.78	2.43	1.51	2.19	2.20	1.92	2.85	1.60	3.47
	1150	3.12	0.89	2.95	1.73	2.71	2.53	2.44	3.28	2.12	3.99
	1300	3.64	1.01	3.46	1.96	3.23	2.86	2.96	3.71	2.64	4.51
	1450	4.15	1.13	3.98	2.19	3.74	3.19	3.47	4.13	3.15	5.03
	1600	4.67	1.24	4.50	2.41	4.26	3.52	3.99	4.56	3.67	5.55
	1750	5.19	1.36	5.01	2.64	4.78	3.85	4.51	4.99	4.19	6.08
KRB-80V	850	3.24	1.12	2.83	2.14	2.36	3.08	1.83	3.94	1.23	4.73
	1000	4.14	1.32	3.73	2.52	3.26	3.62	2.73	4.63	2.13	5.57
	1150	5.04	1.51	4.63	2.90	4.16	4.16	3.63	5.33	3.03	6.40
	1300	5.94	1.71	5.53	3.27	5.06	4.71	4.53	6.02	3.93	7.24
	1450	6.84	1.91	6.43	3.65	5.96	5.25	5.43	6.72	4.83	8.08
	1600	7.74	2.11	7.33	4.03	6.86	5.79	6.33	7.41	5.73	8.91
	1750	8.64	2.30	8.23	4.41	7.76	6.33	7.23	8.11	6.63	9.75
KRB-100V	850	5.79	1.57	5.19	3.00	4.48	4.31	3.67	5.51	2.74	6.63
	1000	7.05	1.84	6.45	3.53	5.74	5.07	4.93	6.49	4.00	7.80
	1150	8.31	2.12	7.71	4.05	7.00	5.83	6.19	7.46	5.26	8.97
	1300	9.57	2.40	8.97	4.58	8.26	6.59	7.45	8.43	6.52	10.14
	1450	10.83	2.67	10.23	5.11	9.52	7.35	8.71	9.41	7.78	11.31
	1600	12.09	2.95	11.49	5.64	10.78	8.11	9.97	10.38	9.04	12.47
	1750	13.35	3.23	12.75	6.17	12.04	8.87	11.23	11.35	10.30	13.64
KRB-125AV	750	8.13	2.05	7.35	3.91	6.48	5.63	5.53	7.20	4.46	8.66
	900	10.02	2.46	9.24	4.70	8.37	6.75	7.42	8.64	6.35	10.39
	1050	11.91	2.86	11.13	5.48	10.26	7.88	9.31	10.08	8.24	12.12
	1200	13.80	3.27	13.02	6.26	12.15	9.00	11.20	11.52	10.13	13.85
	1350	15.69	3.68	14.91	7.04	14.04	10.13	13.09	12.96	12.02	15.59
	1500	17.58	4.09	16.80	7.83	15.93	11.25	14.98	14.40	13.91	17.32
	1650	19.47	4.50	18.69	8.61	17.82	12.38	16.87	15.84	15.80	19.05



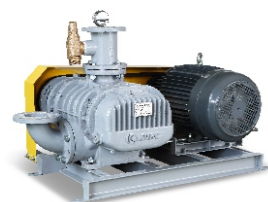
## KRB-V真空型性能表

型號	轉速	風量 (m³/min) 功率 (kW)									
		-10kpa -1000mmaq		-20kpa -2000mmaq		-30kpa -3000mmaq		-40kpa -4000mmaq		-50kpa -5000mmaq	
	min <sup>-1</sup>	m³/min	kW	m³/min	kW	m³/min	kW	m³/min	kW	m³/min	kW
KRB-125V	750	10.29	2.59	9.30	4.96	8.20	7.13	7.01	9.12	5.65	10.97
	900	12.69	3.11	11.70	5.95	10.60	8.55	9.40	10.95	8.04	13.16
	1050	15.08	3.63	14.09	6.94	12.99	9.98	11.79	12.77	10.44	15.35
	1200	17.48	4.15	16.49	7.93	15.39	11.40	14.19	14.59	12.83	17.55
	1350	19.87	4.66	18.88	8.92	17.78	12.83	16.58	16.42	15.23	19.74
	1500	22.26	5.18	21.27	9.91	20.17	14.25	18.98	18.24	17.62	21.93
	1650	24.66	5.70	23.67	10.90	22.57	15.68	21.37	20.07	20.01	24.13
KRB-150V	750	13.32	3.34	12.55	6.39	11.69	9.19	10.68	11.76	9.55	14.14
	900	16.40	4.01	15.64	7.67	14.78	11.03	13.77	14.11	12.64	16.97
	1050	19.49	4.68	18.73	8.95	17.86	12.86	16.86	16.47	15.72	19.80
	1200	22.58	5.35	21.81	10.23	20.95	14.70	19.94	18.82	18.81	22.62
	1350	25.66	6.02	24.90	11.50	24.04	16.54	23.03	21.17	21.90	25.45
	1500	28.75	6.68	27.99	12.78	27.12	18.38	26.12	23.52	24.98	28.28
	1650	31.84	7.35	31.08	14.06	30.21	20.21	29.20	25.88	28.07	31.11
KRB-200V	600	17.01	4.84	15.99	9.27	14.86	13.32	13.49	17.06	11.98	20.51
	750	22.68	6.05	21.66	11.58	20.53	16.65	19.16	21.32	17.65	25.64
	900	28.35	7.27	27.33	13.90	26.20	19.98	24.83	25.59	23.32	30.77
	1050	34.02	8.48	33.00	16.22	31.87	23.32	30.50	29.85	28.99	35.89
	1200	39.69	9.69	38.67	18.53	37.54	26.65	36.17	34.12	34.66	41.02
	1350	45.36	10.90	44.34	20.85	43.21	29.98	41.84	38.38	40.33	46.15
	1500	51.03	12.11	50.01	23.17	48.88	33.31	47.51	42.65	46.00	51.28
KRB-200AV	600	27.72	7.40	26.22	14.16	24.43	20.35	22.35	26.06	19.98	31.34
	750	36.38	9.25	34.88	17.70	33.09	25.44	31.01	32.58	28.64	39.17
	900	45.05	11.10	43.54	21.24	41.75	30.53	39.67	39.09	37.31	47.01
	1050	53.71	12.95	52.21	24.77	50.42	35.62	48.34	45.61	45.97	54.84
	1200	62.37	14.80	60.87	28.31	59.08	40.71	57.00	52.12	54.63	62.67
	1350	71.03	16.65	69.53	31.85	67.74	45.80	65.66	58.64	63.29	70.51
	1500	79.7	18.50	78.2	35.39	76.4	50.89	74.3	65.16	71.96	78.34
KRB-250V	600	27.72	7.40	26.22	14.16	24.43	20.35	22.35	26.06	19.98	31.34
	750	36.38	9.25	34.88	17.70	33.09	25.44	31.01	32.58	28.64	39.17
	900	45.05	11.10	43.54	21.24	41.75	30.53	39.67	39.09	37.31	47.01
	1050	53.71	12.95	52.21	24.77	50.42	35.62	48.34	45.61	45.97	54.84
	1200	62.37	14.80	60.87	28.31	59.08	40.71	57.00	52.12	54.63	62.67
	1350	71.03	16.65	69.53	31.85	67.74	45.80	65.66	58.64	63.29	70.51
	1500	79.7	18.50	78.19	35.39	76.4	50.89	74.32	65.16	71.96	78.34
KRB-250AV	600	39.31	10.34	37.13	17.81	34.37	25.13	31.74	32.48	28.82	39.97
	750	50.78	12.92	48.60	22.26	45.84	31.41	43.21	40.59	40.29	49.97
	900	62.25	15.50	60.07	26.72	57.31	37.70	54.68	48.71	51.76	59.96
	1050	73.71	18.09	71.53	31.17	68.77	43.98	66.14	56.83	63.22	69.95
	1200	85.18	20.67	83.00	35.62	80.24	50.26	77.61	64.95	74.69	79.95
	1350	96.65	23.26	94.47	40.07	91.71	56.55	89.08	73.07	86.16	89.94
	1500	108.1	25.84	105.9	44.53	103.2	62.83	100.5	81.19	97.63	99.93

## KRB-V真空型性能表

型號	轉速	風量 (m³/min) 功率 (kW)									
		-10kpa -1000mmaq		-20kpa -2000mmaq		-30kpa -3000mmaq		-40kpa -4000mmaq		-50kpa -5000mmaq	
	min <sup>-1</sup>	m³/min	kW	m³/min	kW	m³/min	kW	m³/min	kW	m³/min	kW
KRB-300V	600	58.94	14.25	56.27	27.26	53.15	39.19	49.71	50.18	45.70	60.34
	750	75.62	17.81	72.95	34.07	69.83	48.99	66.39	62.72	63.38	75.42
	900	92.30	21.38	89.63	40.89	86.51	58.79	83.07	75.27	79.06	90.51
	1050	109.0	24.94	106.3	47.70	103.2	68.58	99.75	87.81	95.74	105.6
	1200	125.7	28.50	123.0	54.52	119.9	78.38	116.4	100.4	112.4	120.7
	1350	142.3	32.06	139.7	61.33	136.6	88.18	133.1	112.9	129.1	135.8
	1500	159.0	35.63	156.3	68.15	153.2	97.98	149.8	125.4	145.8	150.8
KRB-300AV	600	88.2	21.04	84.4	36.86	79.7	53.34	75.3	68.0	69.0	84.7
	700	104.6	24.54	100.9	43.01	96.2	62.23	91.8	79.4	85.5	98.9
	800	121.0	28.05	117.3	49.15	112.6	71.12	108.2	90.7	101.9	113.0
	900	137.5	31.56	133.7	55.29	129.1	80.00	124.7	102.0	118.4	127.1
	1000	153.9	35.06	150.2	61.44	145.5	88.89	141.1	113.4	134.8	141.2
	1100	170.3	38.57	166.6	67.58	161.9	97.78	157.5	124.7	151.2	155.3
	1200	186.8	42.07	183.0	73.72	178.4	106.7	174.0	136.1	167.7	169.5
KRB-350V	600	138.1	32.72	132.3	57.32	124.7	82.94	117.9	105.8	107.9	131.7
	700	163.6	38.17	157.8	66.87	150.2	96.77	143.4	123.4	133.4	153.7
	800	189.1	43.63	183.3	76.42	175.7	110.6	168.9	141.1	158.9	175.7
	900	214.6	49.08	208.8	85.97	201.2	124.4	194.4	158.7	184.4	197.6
	1000	240.1	54.53	234.3	95.53	226.7	138.2	219.9	176.3	209.9	219.6
	1100	265.6	59.99	259.8	105.1	252.2	152.1	245.4	193.9	235.4	241.5
	1200	291.1	65.44	285.3	114.6	277.7	165.9	270.9	211.6	260.9	263.5
KRB-400V	600	236.3	52.99	228.3	95.77	219.5	137.9	212.4	180.5	203.5	223.0
	650	257.4	57.40	249.4	103.8	240.5	149.4	233.4	195.5	224.6	241.6
	700	278.4	61.82	270.4	111.7	261.6	160.9	254.4	210.6	245.6	260.2
	750	299.4	66.23	291.4	119.7	282.6	172.4	275.4	225.6	266.6	278.8
	800	320.4	70.65	312.5	127.7	303.6	183.9	296.5	240.7	287.6	297.3
	850	341.5	75.07	333.5	135.7	324.6	195.4	317.5	255.7	308.7	315.9
	900	362.5	79.48	354.5	143.7	345.7	206.9	338.5	270.7	329.7	334.5



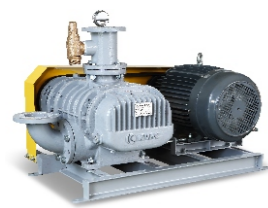


## KRB-C壓力型性能表

型號	轉速 min <sup>-1</sup>	風量(m <sup>3</sup> /min) 功率(kW)															
		10kpa 1000mmaq		20kpa 2000mmaq		30kpa 3000mmaq		40kpa 4000mmaq		50kpa 5000mmaq		60kpa 6000mmaq		70kpa 7000mmaq		80kpa 8000mmaq	
		m <sup>3</sup> /min	kW	m <sup>3</sup> /min	kW	m <sup>3</sup> /min	kW	m <sup>3</sup> /min	kW	m <sup>3</sup> /min	kW	m <sup>3</sup> /min	kW	m <sup>3</sup> /min	kW	m <sup>3</sup> /min	kW
KRB-40C	1650	0.60	0.19	0.57	0.37	0.54	0.53	0.51	0.67	0.49	0.81	0.48	0.94				
	1800	0.68	0.21	0.64	0.40	0.61	0.57	0.59	0.74	0.57	0.88	0.55	1.02				
	1950	0.75	0.23	0.71	0.43	0.69	0.62	0.66	0.80	0.64	0.96	0.62	1.11				
	2100	0.83	0.24	0.79	0.47	0.76	0.67	0.74	0.86	0.71	1.03	0.70	1.19				
	2250	0.90	0.26	0.86	0.50	0.84	0.72	0.81	0.92	0.79	1.11	0.77	1.28				
	2400	0.97	0.28	0.94	0.53	0.91	0.77	0.88	0.98	0.86	1.18	0.85	1.36				
	2550	1.05	0.30	1.01	0.57	0.98	0.81	0.96	1.04	0.94	1.25	0.92	1.45				
KRB-50C	850	0.99	0.41	0.79	0.80	0.64	1.16	0.50	1.51	0.38	1.84	0.29	2.15	0.21	2.45	0.15	2.74
	1000	1.31	0.48	1.11	0.94	0.96	1.37	0.82	1.77	0.70	2.16	0.61	2.53	0.53	2.88	0.47	3.22
	1150	1.63	0.56	1.44	1.08	1.28	1.57	1.15	2.04	1.02	2.49	0.93	2.91	0.86	3.32	0.79	3.71
	1300	1.95	0.63	1.76	1.22	1.61	1.78	1.47	2.31	1.34	2.81	1.25	3.29	1.18	3.75	1.12	4.19
	1450	2.27	0.70	2.08	1.36	1.93	1.98	1.79	2.57	1.67	3.13	1.58	3.67	1.50	4.18	1.44	4.67
	1600	2.60	0.77	2.40	1.50	2.25	2.19	2.11	2.84	1.99	3.46	1.90	4.05	1.82	4.61	1.76	5.16
	1750	2.92	0.85	2.72	1.64	2.57	2.39	2.43	3.11	2.31	3.78	2.22	4.43	2.14	5.05	2.08	5.64
KRB-65C	850	2.07	0.62	1.89	1.21	1.71	1.76	1.55	2.29	1.41	2.78	1.29	3.26	1.19	3.71	1.09	4.15
	1000	2.58	0.73	2.41	1.42	2.22	2.07	2.07	2.69	1.93	3.27	1.81	3.83	1.71	4.37	1.60	4.88
	1150	3.10	0.84	2.93	1.64	2.74	2.38	2.58	3.09	2.45	3.77	2.33	4.41	2.22	5.03	2.12	5.62
	1300	3.62	0.95	3.45	1.85	3.26	2.69	3.10	3.50	2.96	4.26	2.84	4.99	2.74	5.68	2.64	6.35
	1450	4.13	1.06	3.96	2.06	3.77	3.01	3.62	3.90	3.48	4.75	3.36	5.56	3.26	6.34	3.15	7.08
	1600	4.65	1.17	4.48	2.28	4.29	3.32	4.13	4.30	4.00	5.24	3.88	6.14	3.77	6.99	3.67	7.81
	1750	5.17	1.28	5.00	2.49	4.81	3.63	4.65	4.71	4.51	5.73	4.39	6.71	4.29	7.65	4.19	8.55
KRB-80C	850	3.24	1.12	2.87	2.14	2.54	3.08	2.23	3.94	1.95	4.73	1.70	5.47	1.48	6.15	1.28	6.79
	1000	4.14	1.32	3.77	2.52	3.44	3.62	3.13	4.63	2.85	5.57	2.60	6.44	2.38	7.24	2.18	7.99
	1150	5.04	1.51	4.67	2.90	4.34	4.16	4.03	5.33	3.75	6.40	3.50	7.40	3.28	8.33	3.08	9.19
	1300	5.94	1.71	5.57	3.27	5.24	4.71	4.93	6.02	4.65	7.24	4.40	8.37	4.18	9.41	3.98	10.39
	1450	6.84	1.91	6.47	3.65	6.14	5.25	5.83	6.72	5.55	8.07	5.30	9.33	5.08	10.50	4.88	11.58
	1600	7.74	2.11	7.37	4.03	7.04	5.79	6.73	7.41	6.45	8.91	6.20	10.30	5.98	11.58	5.78	12.78
	1750	8.64	2.30	8.27	4.41	7.94	6.33	7.63	8.11	7.35	9.75	7.10	11.26	6.88	12.67	6.68	13.98
KRB-100C	850	5.80	1.57	5.19	3.00	4.65	4.31	4.16	5.51	3.74	6.63	3.36	7.66	3.03	8.62	2.74	9.51
	1000	7.06	1.84	6.45	3.53	5.91	5.07	5.42	6.49	5.00	7.80	4.62	9.01	4.29	10.14	4.00	11.19
	1150	8.32	2.12	7.71	4.05	7.17	5.83	6.68	7.46	6.26	8.97	5.88	10.36	5.55	11.66	5.26	12.86
	1300	9.58	2.40	8.97	4.58	8.43	6.59	7.94	8.43	7.52	10.14	7.14	11.71	6.81	13.18	6.52	14.54
	1450	10.84	2.67	10.23	5.11	9.69	7.35	9.20	9.41	8.78	11.31	8.40	13.06	8.07	14.70	7.78	16.22
	1600	12.10	2.95	11.49	5.64	10.95	8.11	10.46	10.38	10.04	12.47	9.66	14.42	9.33	16.22	9.04	17.90
	1750	13.36	3.23	12.75	6.17	12.21	8.87	11.72	11.35	11.30	13.64	10.92	15.77	10.59	17.74	10.30	19.57
KRB-125AC	750	8.13	2.05	7.43	3.91	6.80	5.62	6.22	7.20	5.72	8.66	5.25	10.01	4.83	11.26	4.46	12.42
	900	10.02	2.46	9.32	4.70	8.69	6.75	8.11	8.64	7.61	10.39	7.14	12.01	6.72	13.51	6.35	14.91
	1050	11.91	2.86	11.21	5.48	10.58	7.87	10.00	10.08	9.50	12.12	9.03	14.01	8.61	15.76	8.24	17.39
	1200	13.80	3.27	13.10	6.26	12.47	9.00	11.89	11.52	11.39	13.85	10.92	16.01	10.50	18.01	10.13	19.88
	1350	15.69	3.68	14.99	7.04	14.36	10.12	13.78	12.96	13.28	15.58	12.81	18.01	12.39	20.27	12.02	22.36
	1500	17.58	4.09	16.88	7.83	16.25	11.25	15.67	14.40	15.17	17.31	14.70	20.01	14.28	22.52	13.91	24.85
	1650	19.47	4.50	18.77	8.61	18.14	12.37	17.56	15.84	17.06	19.04	16.59	22.01	16.17	24.77	15.80	27.33

## KRB-C壓力型性能表

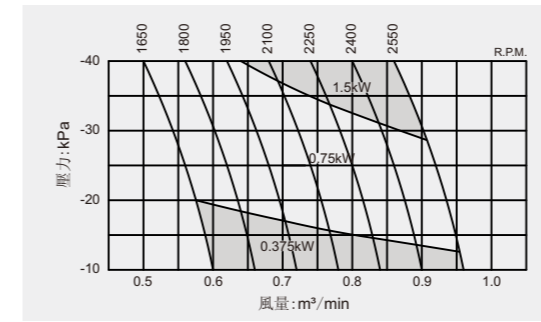
型號	轉速 min <sup>-1</sup>	風量(m <sup>3</sup> /min) 功率(kW)															
		10kpa 1000mmaq		20kpa 2000mmaq		30kpa 3000mmaq		40kpa 4000mmaq		50kpa 5000mmaq		60kpa 6000mmaq		70kpa 7000mmaq		80kpa 8000mmaq	
		m <sup>3</sup> /min	kW	m <sup>3</sup> /min	kW	m <sup>3</sup> /min	kW	m <sup>3</sup> /min	kW	m <sup>3</sup> /min	kW	m <sup>3</sup> /min	kW	m <sup>3</sup> /min	kW	m <sup>3</sup> /min	kW
KRB-125C	750	10.29	2.59	9.42	4.96	8.62	7.13	7.88	9.12	7.25	10.97	6.66	12.67	6.11	14.26	5.65	15.74
	900	12.69	3.11	11.81	5.95	11.01	8.55	10.28	10.95	9.64	13.16	9.05	15.21	8.51	17.11	8.04	18.89
	1050	15.08	3.63	14.20	6.94	13.41	9.98	12.67	12.77	12.03	15.35	11.44	17.74	10.90	19.97	10.44	22.04
	1200	17.48	4.15	16.60	7.93	15.80	11.40	15.07	14.59	14.43	17.55	13.84	20.28	13.29	22.82	12.83	25.18
	1350	19.87	4.66	18.99	8.92	18.19	12.83	17.46	16.42	16.82	19.74	16.23	22.81	15.69	25.67	15.23	28.33
	1500	22.26	5.18	21.39	9.91	20.59	14.25	19.85	18.24	19.22	21.93	18.63	25.35	18.08	28.52	17.62	31.48
	1650	24.66	5.70	23.78	10.90	22.98	15.68	22.25	20.07	21.61	24.13	21.02	27.88	20.48	31.38	20.01	34.63
KRB-150C	750	13.32	3.34	12.62	6.39	11.98	9.19	11.40	11.76	10.87	14.14	10.39	16.34	10.00	18.39	9.61	20.30
	900	16.40	4.01	15.70	7.67	15.06	11.03	14.49	14.11	13.95	16.97	13.48	19.61	13.09	22.07	12.70	24.36
	1050	19.49	4.68	18.79	8.95	18.15	12.86	17.58	16.47	17.04	19.80	16.57	22.88	16.18	25.75	15.78	28.41
	1200	22.58	5.35	21.88	10.23	21.24	14.70	20.66	18.82	20.13	22.62	19.65	26.15	19.26	29.42	18.87	32.47
	1350	25.66	6.02	24.96	11.50	24.33	16.54	23.75	21.17	23.21	25.45	22.74	29.42	22.35	33.10	21.96	36.53
	1500	28.75	6.68	28.05	12.78	27.41	18.38	26.84	23.52	26.30	28.28	25.83	32.69	25.44	36.78	25.05	40.59
	1650	31.84	7.35	31.14	14.06	30.50	20.21	29.92	25.88	29.39	31.11	28.91	35.96	28.52	40.46	28.13	44.65
KRB-200C	600	17.01	4.84	15.95	9.27	15.04	13.32	14.12	17.06	13.53	20.51	12.93	23.71	12.40	26.68	11.98	29.45
	750	22.68	6.05	21.62	11.58	20.71	16.65	19.88	21.32	19.20	25.64	18.60	29.64	18.07	33.36	17.65	36.82
	900	28.35	7.27	27.29	13.90	26.38	19.98	25.55	25.59	24.87	30.77	24.27	35.57	23.74	40.03	23.32	44.18
	1050	34.02	8.48	32.96	16.22	32.05	23.32	31.22	29.85	30.54	35.89	29.94	41.49	29.41	46.70	28.99	51.55
	1200	39.69	9.69	38.63	18.53	37.72	26.65	36.89	34.12	36.21	41.02	35.61	47.42	35.08	53.37	34.66	58.91
	1350	45.36	10.90	44.30	20.85	43.39	29.98	42.56	38.38	41.88	46.15	41.28	53.35	40.75	60.04	40.33	66.27
	1500	51.03	12.11	49.97	23.17	49.06	33.31	48.23	42.65	47.55	51.28	46.95	59.28	46.42	66.71	46.00	73.64
KRB-200AC	600	27.72	7.40	26.22	14.16	24.89	20.35	23.68	26.06	22.58	31.34	21.60	36.23	20.73	40.77	19.98	45.00
	750	36.38	9.25	34.88	17.70	33.55	25.44	32.34	32.58	31.24	39.17	30.26	45.28	29.39	50.96	28.64	56.25
	900	45.05	11.10	43.54	21.24	42.22	30.53	41.00	39.09	39.91	47.01	38.92	54.34	38.06	61.15	37.31	67.50
	1050	53.71	12.95	52.21	24.77	50.88	35.62	49.67	45.61	48.57	54.84	47.59	63.39	46.72	71.34	45.97	78.75
	1200	62.37	14.80	60.87	28.31	59.54	40.71	58.33	52.12	57.23	62.67	56.25	72.45	55.38	81.54	54.63	90.00
	1350	71.03	16.65	69.53	31.85	68.2											



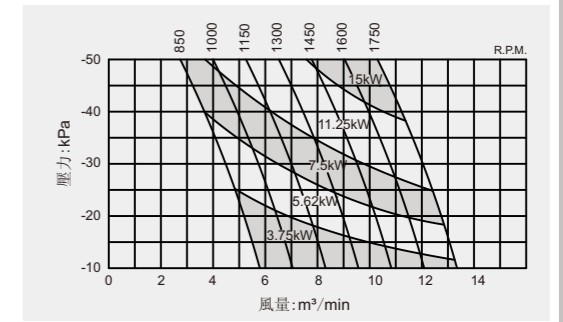
## KRB-C壓力型性能表

型號	轉速 min <sup>-1</sup>	風量 (m <sup>3</sup> /min) 功率 (kW)															
		10kpa 1000mmaq		20kpa 2000mmaq		30kpa 3000mmaq		40kpa 4000mmaq		50kpa 5000mmaq		60kpa 6000mmaq		70kpa 7000mmaq		80kpa 8000mmaq	
		m <sup>3</sup> /min	kW	m <sup>3</sup> /min	kW	m <sup>3</sup> /min	kW	m <sup>3</sup> /min	kW	m <sup>3</sup> /min	kW	m <sup>3</sup> /min	kW	m <sup>3</sup> /min	kW	m <sup>3</sup> /min	kW
KRB-300C	600	58.94	14.44	55.49	25.88	53.71	37.23	52.04	47.70	50.48	58.83	49.26	68.88	47.59	79.49	46.70	88.83
	750	75.62	18.06	72.17	32.35	70.39	46.54	68.72	59.63	67.16	73.53	65.94	86.10	64.27	99.36	63.38	111.0
	900	92.30	21.67	88.85	38.82	87.07	55.85	85.40	71.55	83.84	88.24	82.62	103.3	80.95	119.2	80.06	133.3
	1050	109.0	25.28	105.5	45.29	103.7	65.16	102.1	83.48	100.5	102.9	99.30	120.5	97.63	139.1	96.74	155.5
	1200	125.7	28.89	122.2	51.76	120.4	74.46	118.8	95.41	117.2	117.7	116.0	137.8	114.3	159.0	113.4	177.7
	1350	142.3	32.50	138.9	58.23	137.1	83.77	135.4	107.3	133.9	132.4	132.7	155.0	131.0	178.8	130.1	199.9
	1500	159.0	36.11	155.6	64.70	153.8	93.08	152.1	119.3	150.6	147.1	149.3	172.2	147.7	198.7	146.8	222.1
KRB-300AC	600	88.3	21.07	85.0	37.30	82.3	53.64	80.0	71.4	78.1	87.0	76.1	103.1	74.5	119.0	72.5	136.5
	700	104.7	24.58	101.4	43.52	98.7	62.58	96.4	83.3	94.5	101.5	92.5	120.3	90.9	138.9	88.9	159.3
	800	121.1	28.10	117.8	49.74	115.1	71.52	112.8	95.2	110.9	116.0	108.9	137.5	107.3	158.7	105.3	182.1
	900	137.5	31.61	134.2	55.95	131.5	80.46	129.2	107.1	127.3	130.5	125.3	154.7	123.7	178.6	121.7	204.8
	1000	153.9	35.12	150.6	62.17	147.9	89.39	145.6	119.0	143.7	145.0	141.7	171.9	140.1	198.4	138.1	227.6
	1100	170.3	38.63	167.0	68.39	164.3	98.33	162.0	130.9	160.1	159.5	158.1	189.1	156.5	218.2	154.5	250.3
	1200	186.7	42.15	183.4	74.60	180.7	107.3	178.4	142.8	176.5	174.0	174.5	206.3	172.9	238.1	170.9	273.1
KRB-350C	600	138.3	32.31	133.1	58.00	129.0	83.48	125.2	109.6	121.9	134.1	119.1	160.3	116.3	182.7	113.5	212.3
	700	163.8	37.70	158.6	67.67	154.5	97.39	150.7	127.9	147.4	156.4	144.6	187.1	141.8	213.2	139.0	247.7
	800	189.3	43.08	184.1	77.33	180.0	111.3	176.2	146.2	172.9	178.8	170.1	213.8	167.3	243.7	164.5	283.1
	900	214.8	48.47	209.6	87.00	205.5	125.2	201.7	164.5	198.4	201.1	195.6	240.5	192.8	274.1	190.0	318.5
	1000	240.3	53.85	235.1	96.67	231.0	139.1	227.2	182.7	223.9	223.4	221.1	267.2	218.3	304.6	215.5	353.9
	1100	265.8	59.24	260.6	106.3	256.5	153.0	252.7	201.0	249.4	245.8	246.6	294.0	243.8	335.0	241.0	389.2
	1200	291.3	64.62	286.1	116.0	282.0	167.0	278.2	219.3	274.9	268.1	272.1	320.7	269.3	365.5	266.5	424.6
KRB-400C	600	236.3	53.28	230.3	95.65	225.5	137.7	221.3	180.8	217.6	221.1	214.1	264.4	211.3	301.4	208.8	350.1
	650	257.4	57.73	251.4	103.6	246.5	149.1	242.3	195.9	238.6	239.5	235.2	286.5	232.3	326.5	229.8	379.3
	700	278.4	62.17	272.4	111.6	267.5	160.6	263.3	210.9	259.6	257.9	256.2	308.5	253.4	351.6	250.8	408.5
	750	299.4	66.61	293.4	119.6	288.6	172.1	284.4	226.0	280.7	276.4	277.2	330.5	274.4	376.7	271.9	437.7
	800	320.4	71.05	314.4	127.5	309.6	183.6	305.4	241.1	301.7	294.8	298.2	352.6	295.4	401.8	292.9	466.8
	850	341.5	75.49	335.5	135.5	330.6	195.0	326.4	256.1	322.7	313.2	319.3	374.6	316.4	426.9	313.9	496.0
	900	362.5	79.93	356.5	143.5	351.6	206.5	347.4	271.2	343.7	331.6	340.3	396.7	337.5	452.0	335.0	525.2

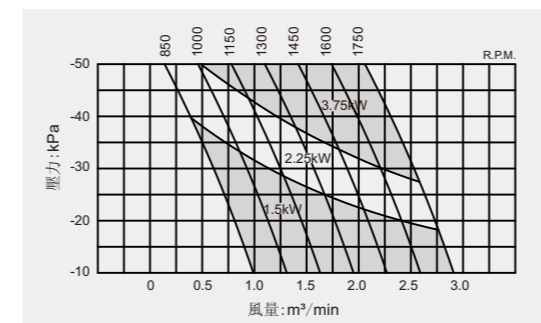
## KRB-V真空型性能曲線



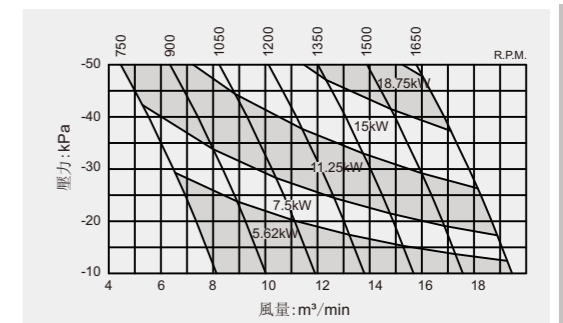
KRB-40V



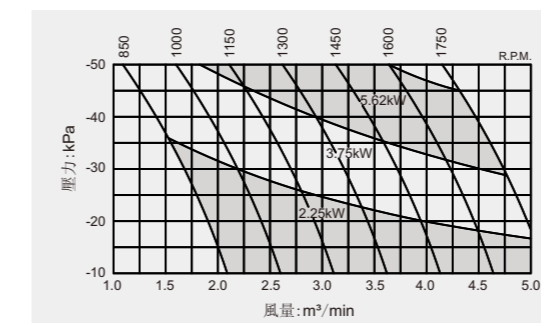
KRB-100V



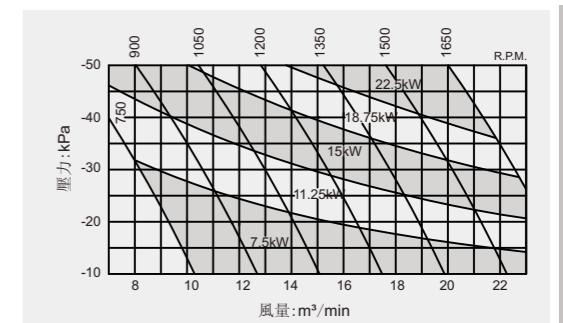
KRB-50V



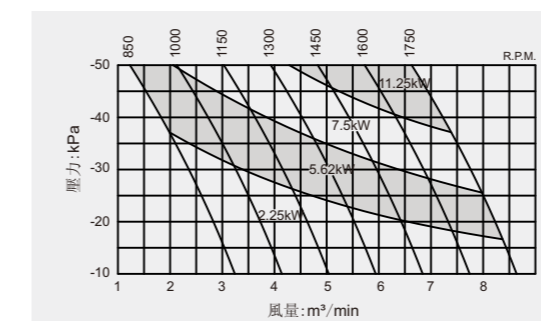
KRB-125AV



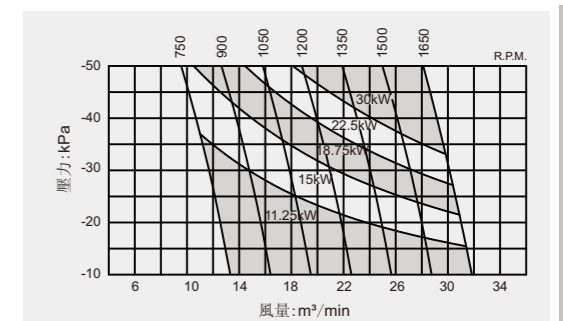
KRB-65V



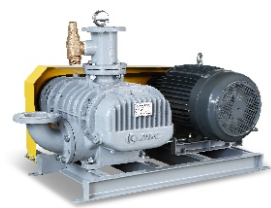
KRB-125V



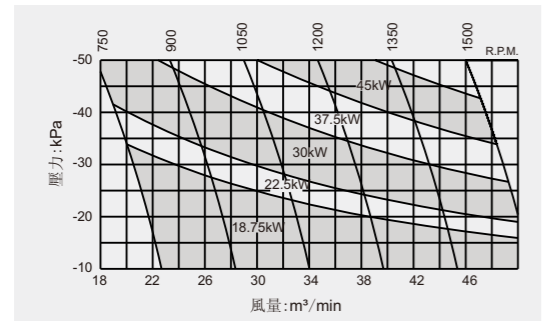
KRB-80V



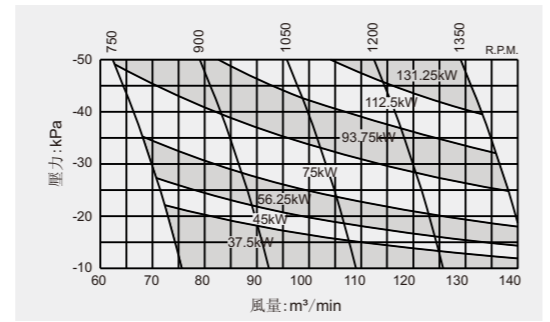
KRB-150V



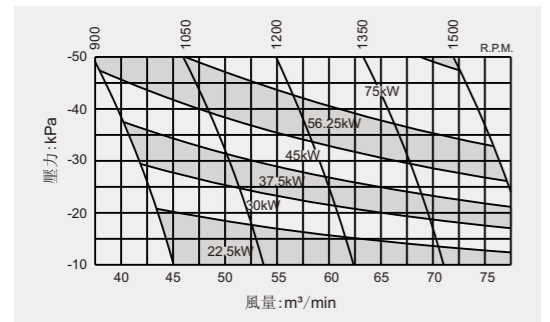
## KRB-V真空型性能曲線



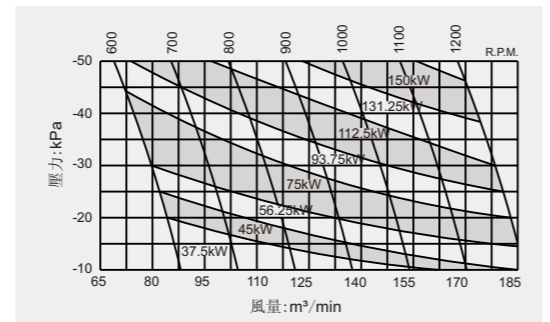
KRB-200V



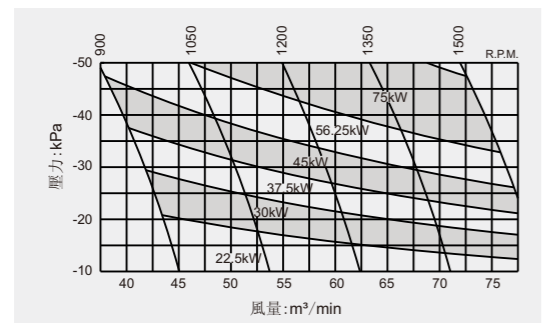
KRB-300V



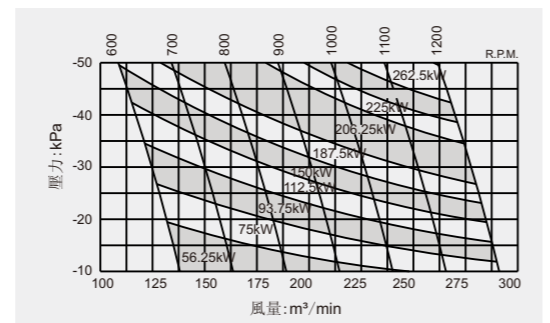
KRB-200AV



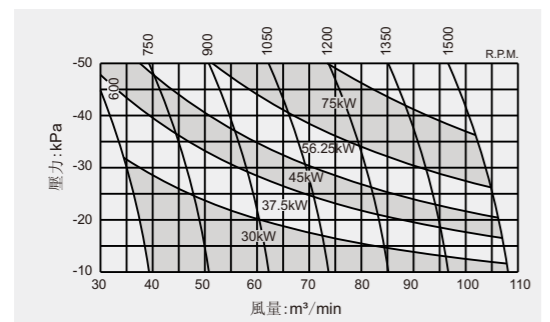
KRB-300AV



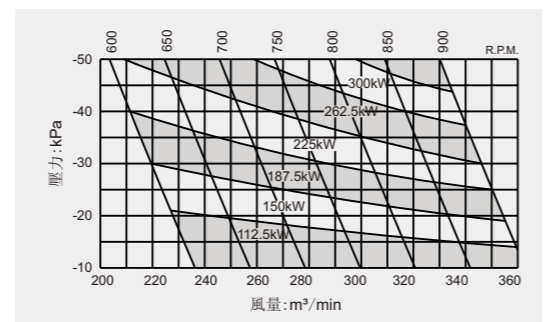
KRB-250V



KRB-350V

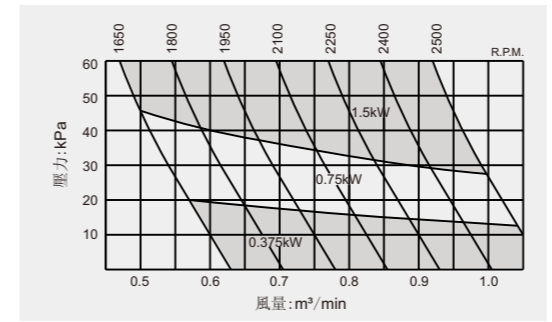


KRB-250V

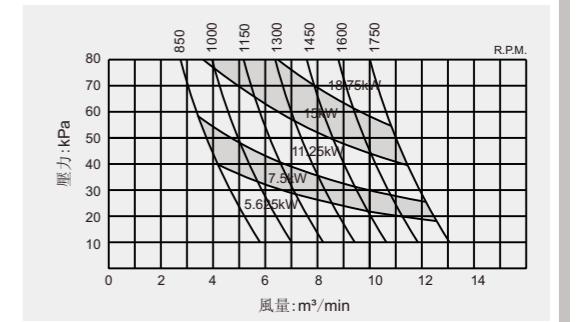


KRB-400V

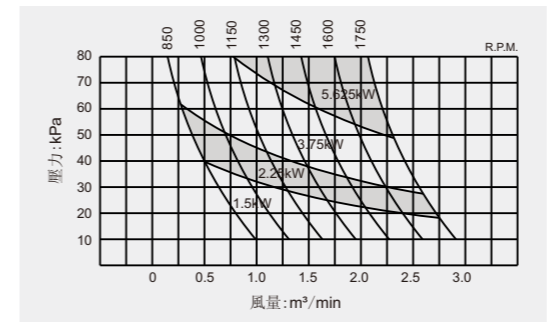
## KRB-C壓力型性能曲線



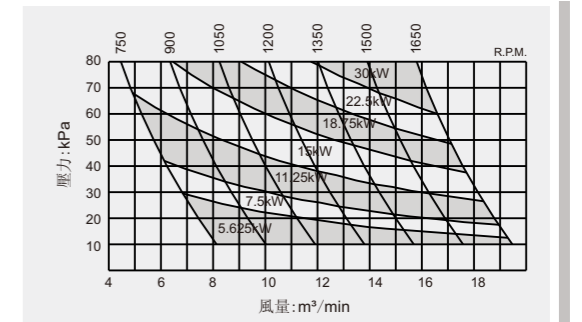
KRB-40C



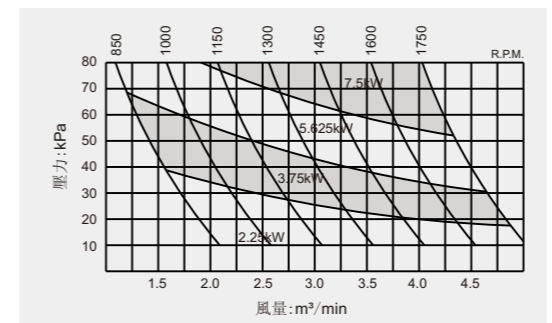
KRB-100C



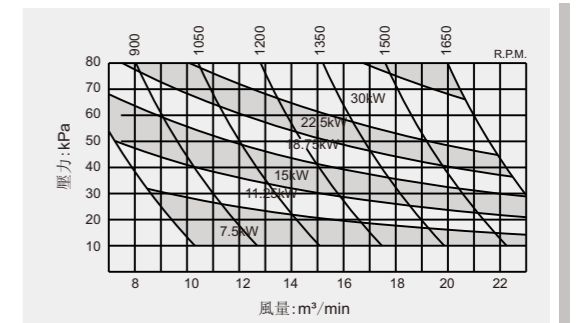
KRB-50C



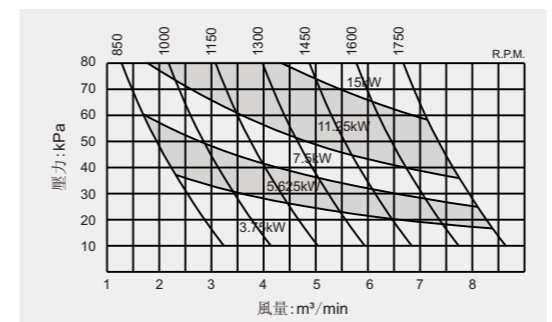
KRB-125AC



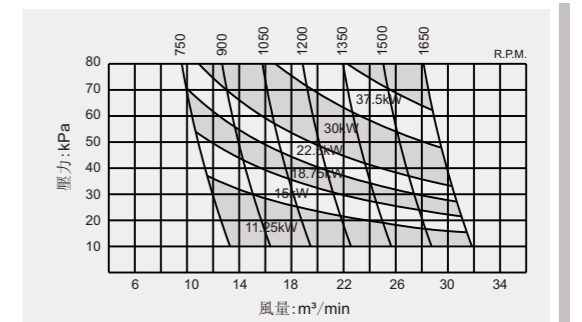
KRB-65C



KRB-125C

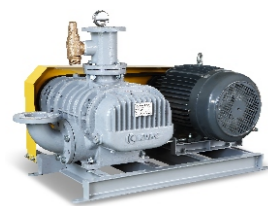


KRB-80C

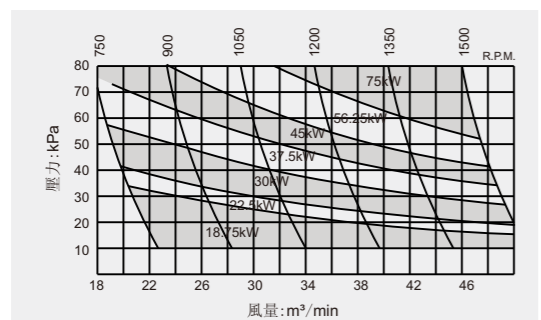


KRB-150C

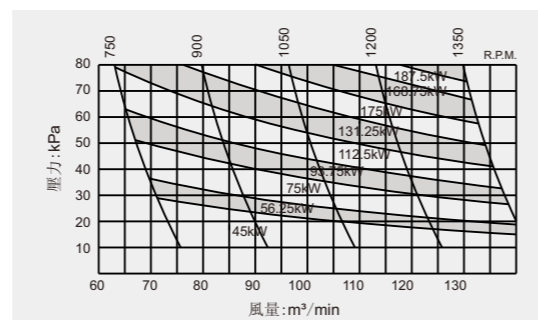




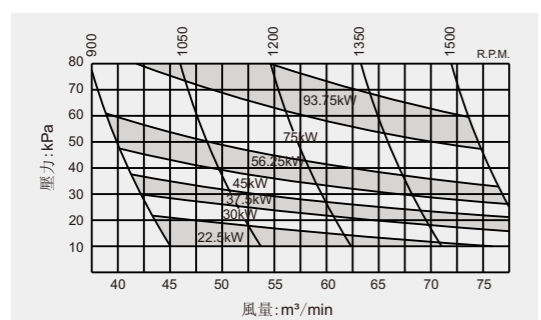
## KRB-C壓力型性能曲線



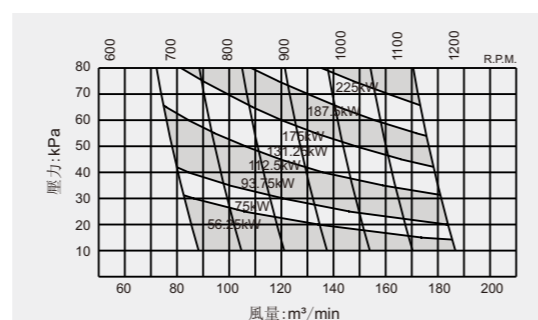
KRB-200C



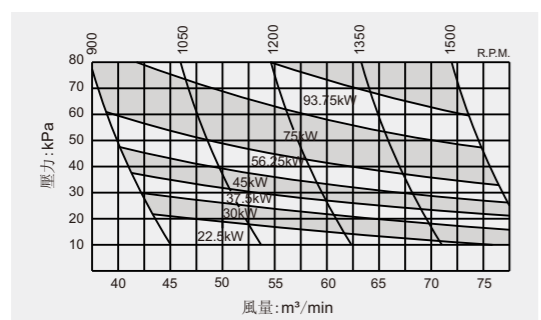
KRB-300C



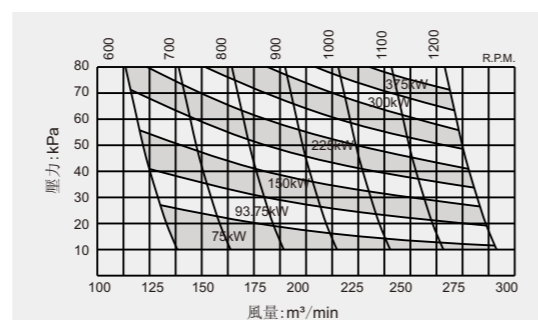
KRB-200AC



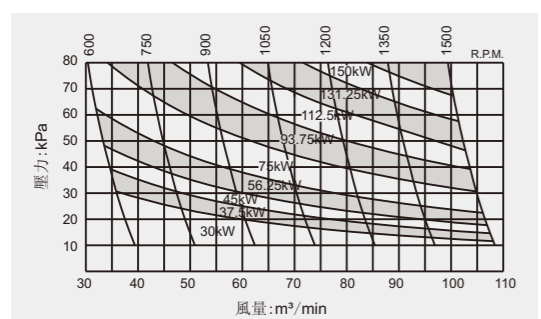
KRB-300AC



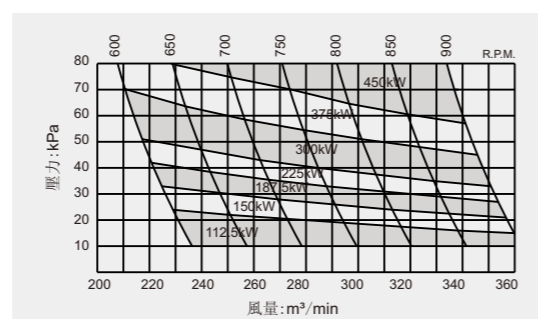
KRB-250C



KRB-350C



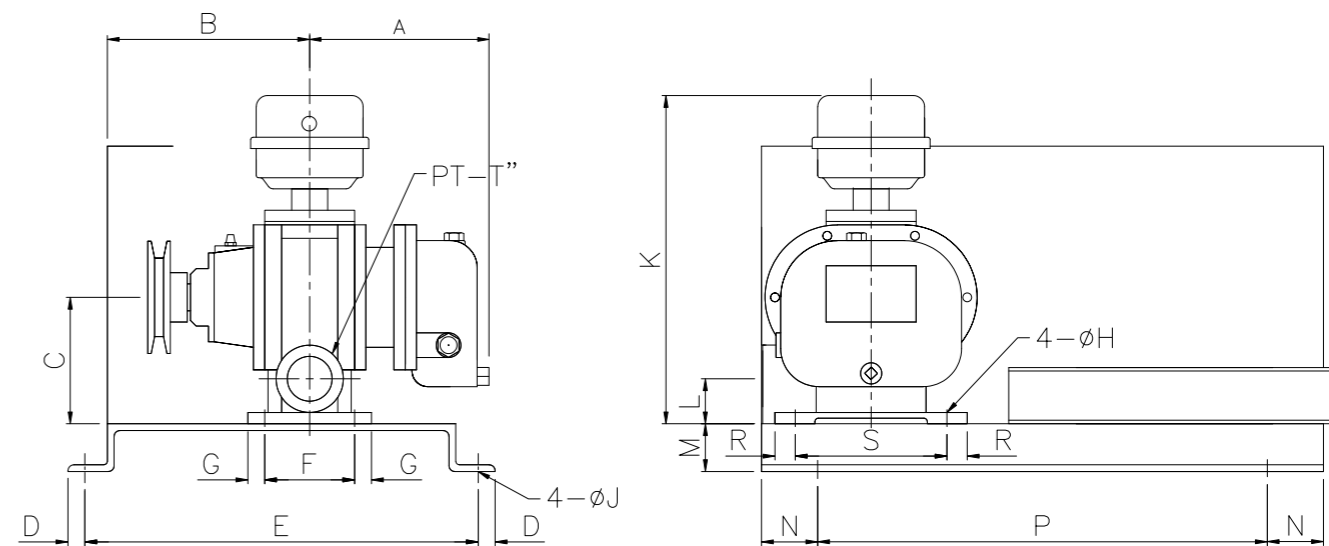
KRB-250AC



KRB-400C

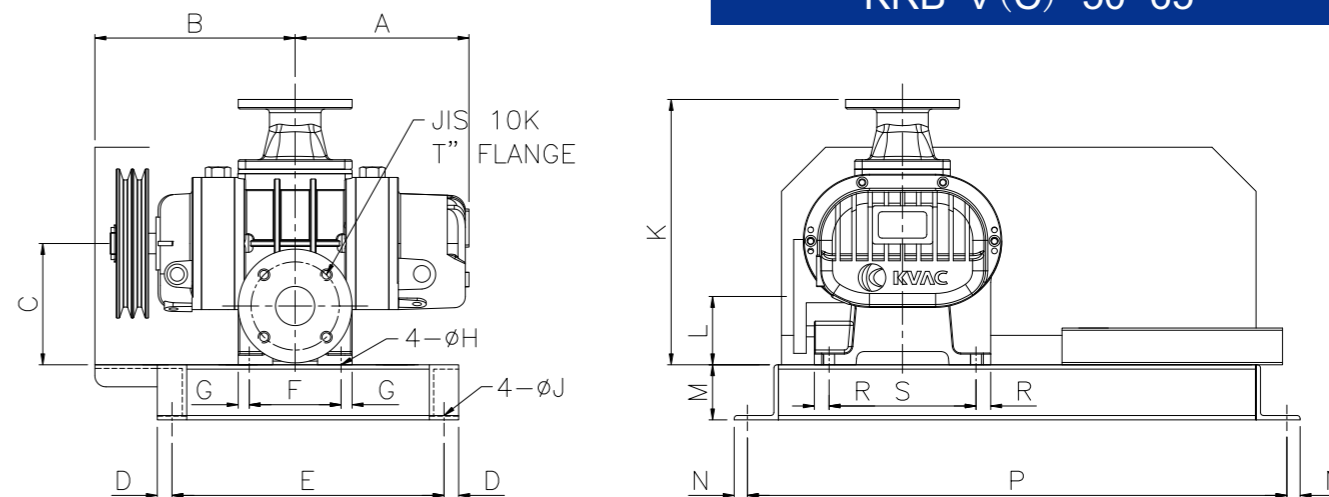
## 外形尺寸圖

KRB-V(C)-25~40

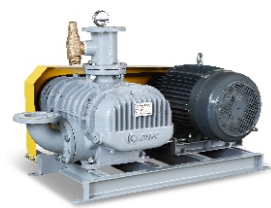


型號	A	B	C	D	E	F	G	H	J	K	L	M	N	P	R	S	T	WT (kg)
KRB-25	135	145	120	15	350	54	13	10	12	340	40	43	50	400	15	135	1	20
KRB-40	162	185	120	15	350	80	15	10	12	340	40	43	50	400	15	135	1.5	25

KRB-V(C)-50~65

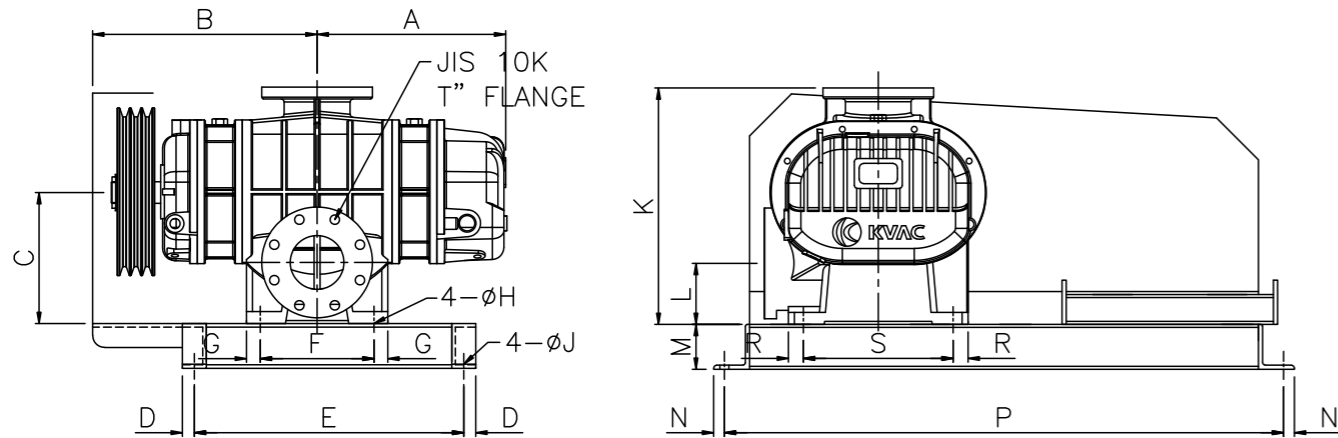


型號	A	B	C	D	E	F	G	H	J	K	L	M	N	P	R	S	T	WT (kg)
KRB-50	240	270	168	20	370	125	15	15	15	356	90	75	18	734	15	200	2	76
KRB-65	280	290	173	20	370	210	15	15	15	356	95	75	18	734	15	200	2.5	94



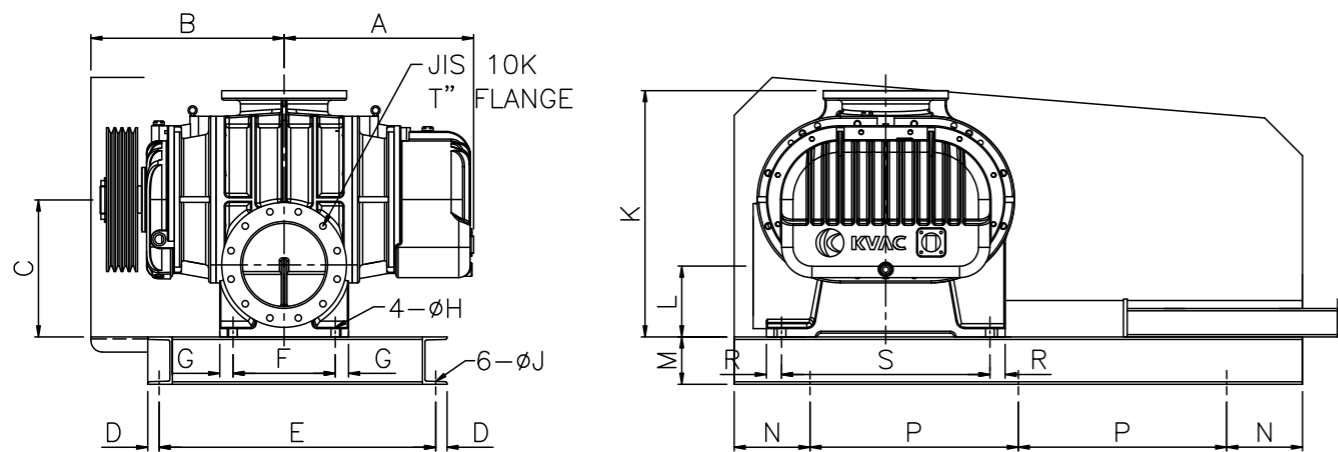
## 外形尺寸圖

### KRB-V(C)-80~150



型號	A	B	C	D	E	F	G	H	J	K	L	M	N	P	R	S	T	WT(kg)
KRB-80	315	375	220	20	450	190	25	19	15	395	102	75	18	934	25	250	3	167
KRB-100	365	425	220	20	450	290	25	19	15	395	115	75	18	934	25	250	4	193
KRB-125A	405	445	265	25	605	230	25	19	19	475	145	100	20	1190	25	350	5	319
KRB-125	445	485	300	25	605	320	25	19	19	515	155	100	20	1190	25	350	5	353
KRB-150	500	540	300	25	605	425	25	19	19	515	155	100	20	1190	25	350	6	418

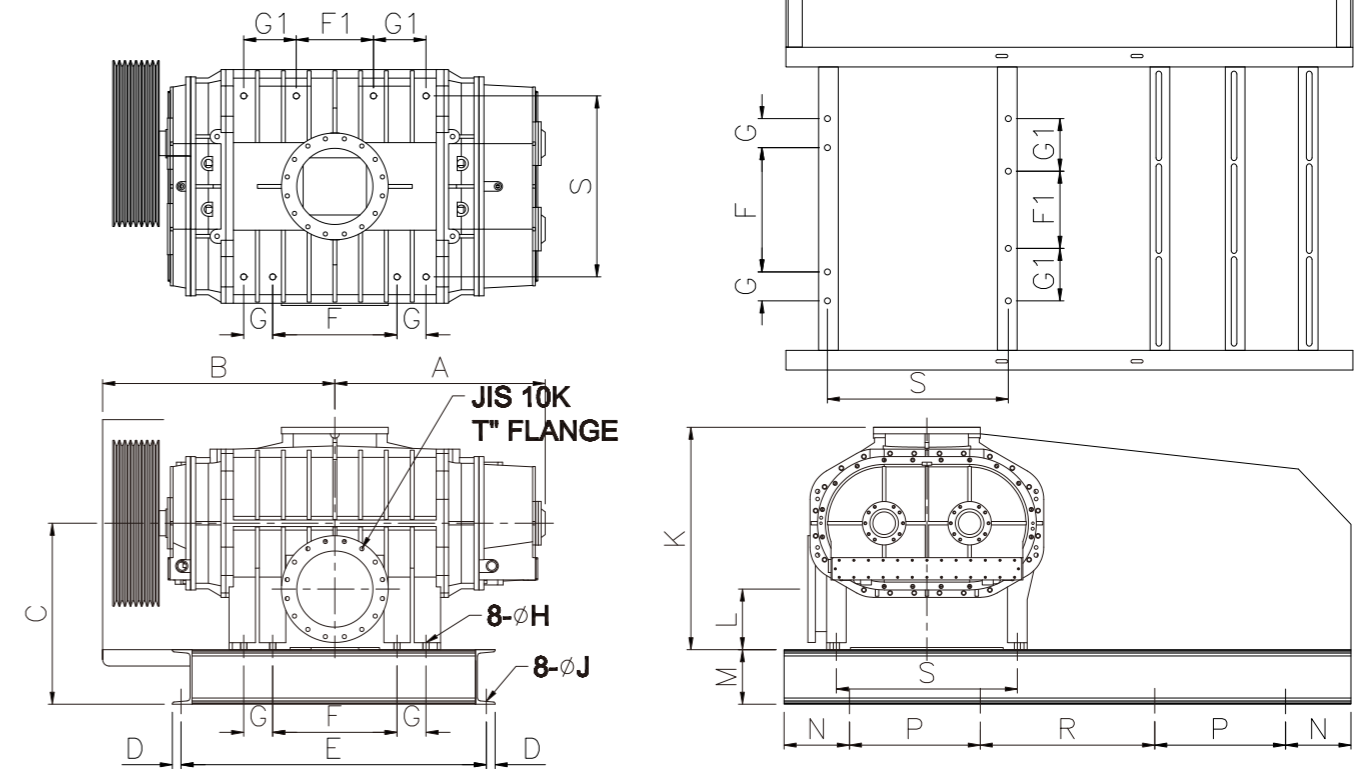
### KRB-V(C)-200~300



型號	A	B	C	D	E	F	G	H	J	K	L	M	N	P	R	S	T	WT(kg)
KRB-200	515	495	363	30	730	270	35	23	19	650	190	125	200	550	40	550	8	720
KRB-200A	605	595	363	30	730	460	35	23	19	665	190	125	200	550	40	550	8	897
KRB-250	605	595	388	30	730	460	35	23	19	675	225	125	200	550	40	550	10	913
KRB-250A	778	678	500	40	850	650	65	27	24	875	250	200	200	800	55	620	10	1665
KRB-300	900	805	500	40	1120	650	65	27	24	875	250	200	200	800	55	620	12	2010
KRB-300A	954	840	505	40	1300	660	60	27	24	930	243	200	200	800	60	680	12	3200

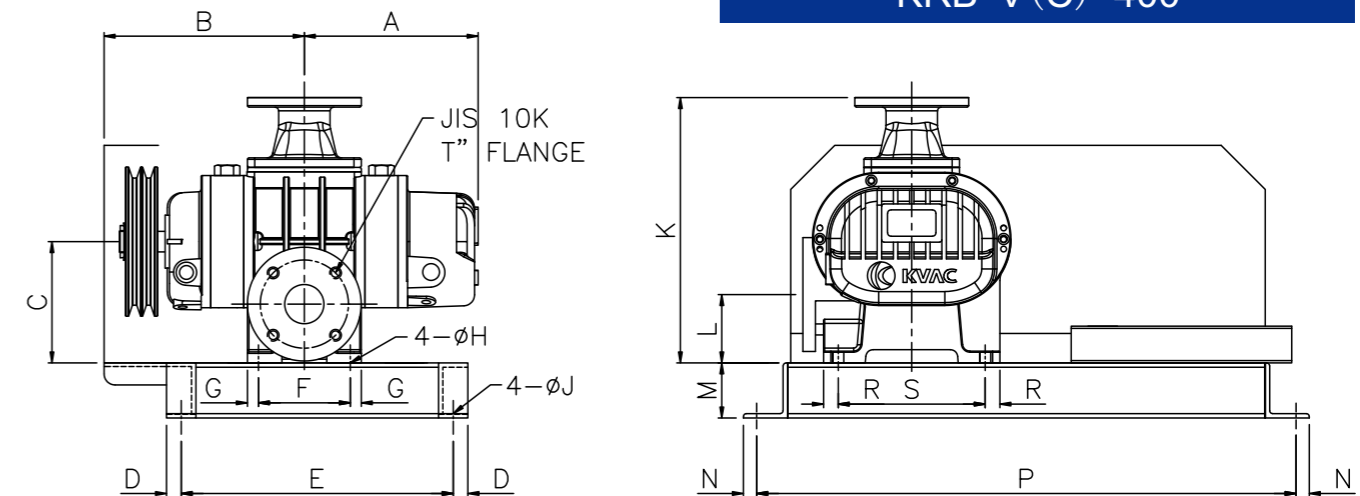
## 外形尺寸圖

### KRB-V(C)-350

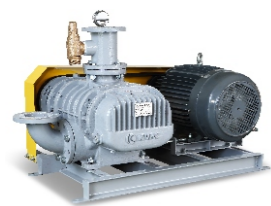


型號	A	B	C	D	E	F	F1	G	G1	H	J	K	L	M	N	P	R	S	T	WT(kg)
KRB-350	965	1065	830	40	1400	570	354	133	35	241	24	1020	278	250	300	600	800	830	14	4100

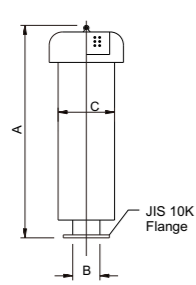
### KRB-V(C)-400



型號	A	B	C	D	E	F	G	H	J	K	L	M	N	P	R	S	T	WT(kg)
KRB-400	1043	1147	945	40	1400	930	60	35	24	1215	315	250	300	600	800	435	16	4650



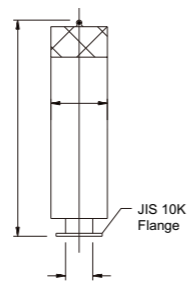
## 附屬配件



UNITS : mm

MODEL	A	B	C	適用機型
0-050	680	50	165	KRB-50V(C)
0-065	680	65	165	KRB-65V(C)
0-080	800	80	216	KRB-80V(C)
0-100	820	100	216	KRB-100V(C)
0-125	1300	125	350	KRB-125V(C)
0-150	1300	150	350	KRB-150V(C)
0-200	2030	200	525	KRB-200V(C)
0-250	2030	250	600	KRB-250V(C)
0-300	2240	300	700	KRB-300V(C)
0-350	2570	350	800	KRB-350V(C)
0-400	2570	400	800	KRB-400V(C)

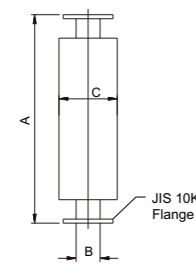
室外入口消音器



UNITS : mm

MODEL	A	B	C	適用機型
I-050	680	50	165	KRB-50V(C)
I-065	680	65	165	KRB-65V(C)
I-080	800	80	216	KRB-80V(C)
I-100	820	100	267	KRB-100V(C)
I-125	1300	125	350	KRB-125V(C)
I-150	1300	150	350	KRB-150V(C)
I-200	2030	200	525	KRB-200V(C)
I-250	2030	250	600	KRB-250V(C)
I-300	2240	300	700	KRB-300V(C)
I-350	2570	350	800	KRB-350V(C)
I-400	2570	400	800	KRB-400V(C)

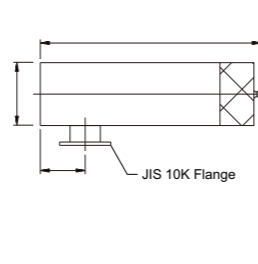
室內入口消音器



UNITS : mm

MODEL	A	B	C	適用機型
D-050	660	50	165	KRB-50V(C)
D-065	660	65	165	KRB-65V(C)
D-080	760	80	216	KRB-80V(C)
D-100	760	100	216	KRB-100V(C)
D-125	1190	125	350	KRB-125V(C)
D-150	1190	150	350	KRB-150V(C)
D-200	1735	200	525	KRB-200V(C)
D-250	1735	250	600	KRB-250V(C)
D-300	1735	300	700	KRB-300V(C)
D-350	2230	350	800	KRB-350V(C)
D-400	2230	400	800	KRB-400V(C)

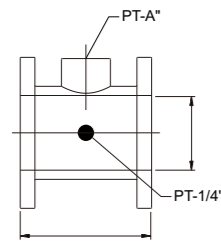
出口消音器



UNITS : mm

MODEL	A	B	C	適用機型
RO-050	580	165	120	KRB-50V(C)
RO-065	580	165	120	KRB-65V(C)
RO-080	700	216	150	KRB-80V(C)
RO-100	700	267	150	KRB-100V(C)
RO-125	1200	350	150	KRB-125V(C)
RO-150	1200	350	150	KRB-150V(C)
RO-200	1880	525	400	KRB-200V(C)
RO-250	1880	600	400	KRB-250V(C)
RO-300	2090	700	400	KRB-300V(C)
RO-350	2420	800	400	KRB-350V(C)
RO-400	2420	800	400	KRB-400V(C)

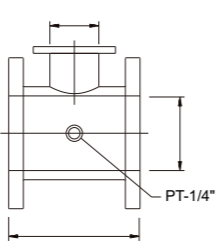
臥式室內入口消音器



UNITS : mm

MODEL	A	B	L	適用機型
T-050	1.5"	50	150	KRB-50V(C)
T-065	1.5"	65	150	KRB-65V(C)
T-080	1.5"	80	165	KRB-80V(C)
T-100	1.5"	100	165	KRB-100V(C)
T-125	2"	125	205	KRB-125V(C)
T-150	2"	150	210	KRB-150V(C)
T-200	2"	200	265	KRB-200V(C)

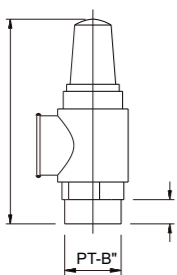
三通管



UNITS : mm

MODEL	A	B	L	適用機型
T-250	80	250	295	KRB-250V(C)
T-300	80	300	350	KRB-300V(C)
T-350	125	350	400	KRB-350V(C)
T-400	125	400	500	KRB-400V(C)

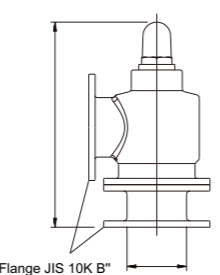
三通管



UNITS : mm

MODEL	A	B	C	適用機型
R-038	132	1.5"	26	KRB-50-100V(C)
R-050	150	2"	28	KRB-125-200V(C)

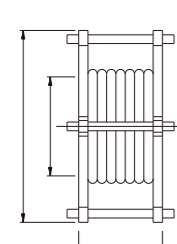
安全閥



UNITS : mm

MODEL	A	B	C	適用機型
R-080	485	3"	80	KRB-250-300V(C)
R-125	485	5"	125	KRB-350-400V(C)

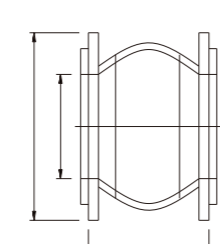
安全閥



UNITS : mm

MODEL	A	B	L	適用機型
JF-050	50	155	150	KRB-50V(C)
JF-065	65	175	150	KRB-065V(C)
JF-080	80	185	150	KRB-080V(C)
JF-100	100	210	150	KRB-100V(C)
JF-125	125	250	150	KRB-125V(C)
JF-150	150	280	150	KRB-150V(C)
JF-200	200	330	200	KRB-200V(C)
JF-250	250	400	200	KRB-250V(C)
JF-300	300	445	200	KRB-300V(C)
JF-350	350	490	230	KRB-350V(C)
JF-400	400	560	250	KRB-400V(C)

伸縮接頭

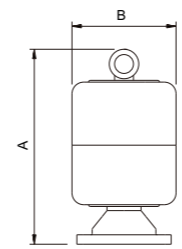


UNITS : mm

MODEL	A	B	L	適用機型
F-050	50	155	105	KRB-50V(C)
F-065	65	175	115	KRB-065V(C)
F-080	80	185	130	KRB-080V(C)
F-100	100	210	135	KRB-100V(C)
F-125	125	250	170	KRB-125V(C)
F-150	150	280	180	KRB-150V(C)
F-200	200	330	205	KRB-200V(C)
F-250	250	400	240	KRB-250V(C)
F-300	300	445	260	KRB-300V(C)
F-350	350	490	265	KRB-350V(C)
F-400	400	560	265	KRB-400V(C)

防震接頭

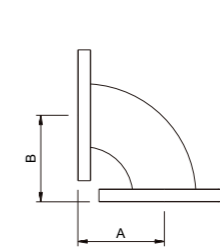
## 附屬配件



UNITS : mm

MODEL	A	B	適用機型
S-50	320	176	KRB-50V(C)
S-65	320	176	KRB-65V(C)

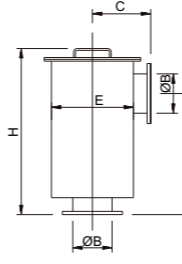
入口消音器



UNITS : mm

MODEL	A	B	適用機型
HE-050	83	121	KRB-50V(C)
HE-065	103	103	KRB-65V(C)
HE-080	122	122	KRB-80V(C)
HE-100	160	160	KRB-100V(C)
HE-125	199	199	KRB-125V(C)
HE-150	237	237	KRB-150V(C)
HE-200	313	313	KRB-200V(C)
HE-250	389	389	KRB-250V(C)
HE-300	465	465	KRB-300V(C)
HE-350	541	541	KRB-350V(C)
HE-400	618	618	KRB-400V(C)

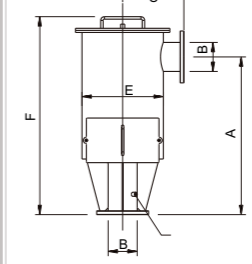
90°彎頭



UNITS : mm

MODEL	A	B	C	E	H
B-050	395	50	180	210	530
B-065	395	65	180	210	530
B-080	480	80	210	270	670
B-100	480	100	210	270	670

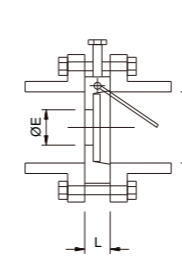
真空過濾筒



UNITS : mm

MODEL	A	B	C	E	H
B-125	760	125	270	330	770
B-150	760	150	270	330	770
B-200	920	200	370	492	1140
B-250	1092	250	358	492	1340
B-300	1200	300	420	612	1540
B-350	1300	350	515	777	1645
B-400	1300	400	515	777	1645

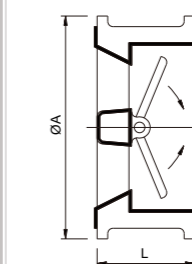
真空過濾筒



UNITS : mm

MODEL	D	E	L	適用機型
C-050	50	30	17	KRB-50C
C-065	65	45	19	KRB-65C
C-080	80	55	20	KRB-80C
C-100	100	70	20	KRB-100C
C-125	125	90	23	KRB-125C
C-150	150	110	24	KRB-150C
C-200	200	140	28	KRB-200C
C-250	250	190	28	KRB-250C

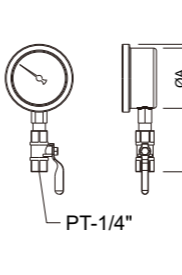
單瓣式逆止閥



UNITS : mm

MODEL	A	L	適用機型
DC-200	270	127	KRB-200V(C)
DC-250	332	146	KRB-250V(C)
DC-300	377	181	KRB-300V(C)
DC-350	420	184	KRB-350V(C)
DC-400	483	191	KRB-400V(C)

雙瓣式逆止閥

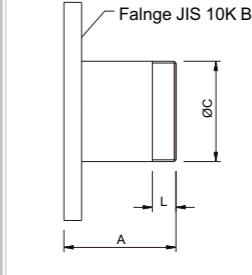


UNITS : mm

MODEL	A	B	適用機型
AC-A	63	133.5	KRB-50-400V(C)

壓力範圍 76-0cmHg, 0-1kg/cm<sup>2</sup>

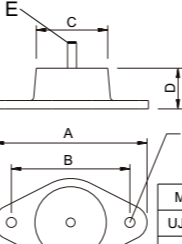
油式壓力表



UNITS : mm

MODEL	A	B	C	L	適用機型
V-050	95	2"	50	40	KRB-50V(C)
V-065	95	2.5"	65	40	KRB-65V(C)
V-080	95	3"	80	40	KRB-80V(C)
V-100	95	4"	100	40	KRB-100V(C)
V-125	155	5"	125	50	KRB-125V(C)
V-150	155	6"	150	50	KRB-150V(C)
V-200	155	8"	200	60	KRB-200V(C)
V-250	155	10"	250	60	KRB-250V(C)
V-300	155	12"	300	60	KRB-300V(C)
V-350	160	14"	350	70	KRB-350V(C)
V-400	160	16"	400	70	KRB-400V(C)

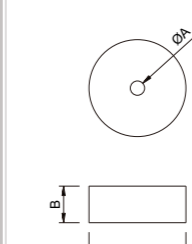
管接頭



UNITS : mm

MODEL	A	B	C	D	E	F	適用範圍 (kg)
UJ-200J	142	110	65	55	3/8"	12	0-150
UJ-500J	214	166	100	57	1/2"	14	140-450
UJ-800J	285	220	130	80	1/2"	17	400-750

避震器



UNITS : mm

MODEL	A	B	C	D	E	F
KRB-40V(C)	15	25	50			
KRB-50-65V(C)	15	25	75			
KRB-80-100V(C)	25	39	102			
KRB-125-400V(C)				101	147	10

避震墊





## 一流的服務和培訓，造就高質量的產品

負責任、可信賴、高效率，絕對物超所值！

全系列的備用零件我們有充足的維修零配件在庫存品，即時快速的滿足客戶需求。

### 維修工廠

在我們的維修工廠裏，由原廠訓練的資深工程人員為您提供最細心、最規範的維修服務。

### 現場服務

在一般條件允許的情況下，我們專業服務人員在24小時內可以到達客戶指定的生產現場，提供到場判定故障發生原因及提供有限制的現場維修服務。

